



The Maryland Public Policy Institute

PERPETUAL SHORTFALL

Maryland's Pension and Benefit Funds

APPENDIX

PERPETUAL SHORTFALL

Maryland's Pension and Benefit Funds

APPENDIX



The Maryland Public Policy Institute

Published by
The Maryland Public Policy Institute
One Research Court, Suite 450
Rockville, Maryland 20850
240.686.3510
mdpolicy.org

Copyright © 2013

*Nothing written here is to be construed as the official opinion of the Maryland Public Policy Institute
or as an attempt to aid or hinder the passage of any bill before the Maryland General Assembly.*

PERPETUAL SHORTFALL

Maryland's Pension and Benefit Funds

GABRIEL J. MICHAEL

THIS APPENDIX to “Perpetual Shortfall: Maryland’s Pension and Benefit Funds” provides a graphical presentation of the fiscal status of all pension and OPEB funds in Maryland for which data are available. Maryland’s state pension and OPEB funds are presented first, followed by the counties and Baltimore City in alphabetical order. Generally, each fund has four graphs:

- a comparison of liabilities and assets over time (a large gap between these is bad).
- a comparison of the actuarially required annual contribution (the amount necessary to fund the pension or OPEB benefit), and the annual contribution that was actually made over time (a large gap between these is bad).
- the funded ratio of the fund over time (smaller is worse).
- the unfunded liability as a percentage of payroll over time. This provides an alternative measure of the size and severity of liabilities (larger is worse).

A NOTE ABOUT THE GRAPHS

Before drawing conclusions based on graphical representations of data, one should carefully examine the scales used in the graph. Because of the large number of graphs and the large differences in sizes between counties, the scales used on the vertical axes of the graphs are automatically adjusted based on the data displayed. Automatic adjustment ensures that all relevant data points are visible, and that useful visual information can be conveyed. However, it also means that graphs with different scales are not directly comparable. Keep in mind the following caveats when examining the graphs:

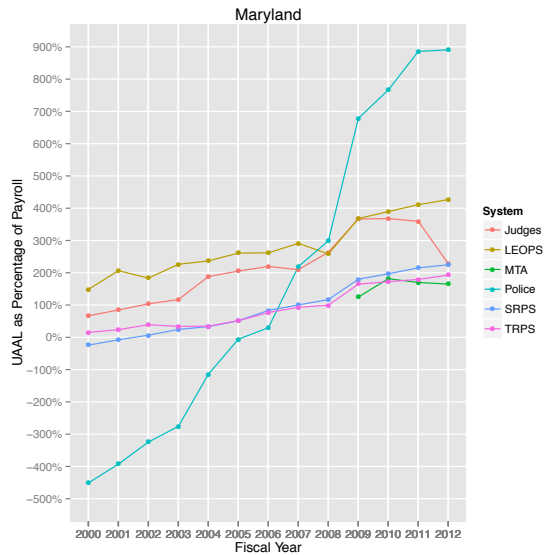
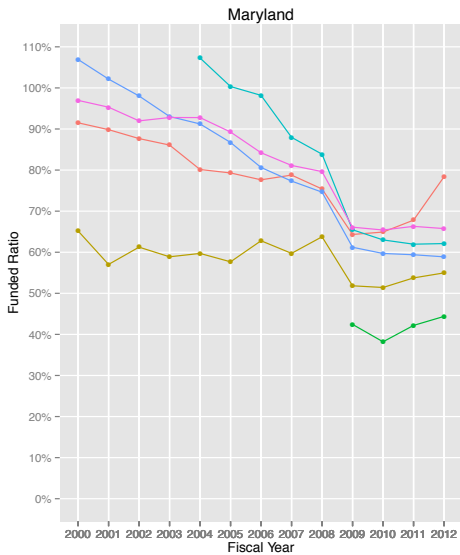
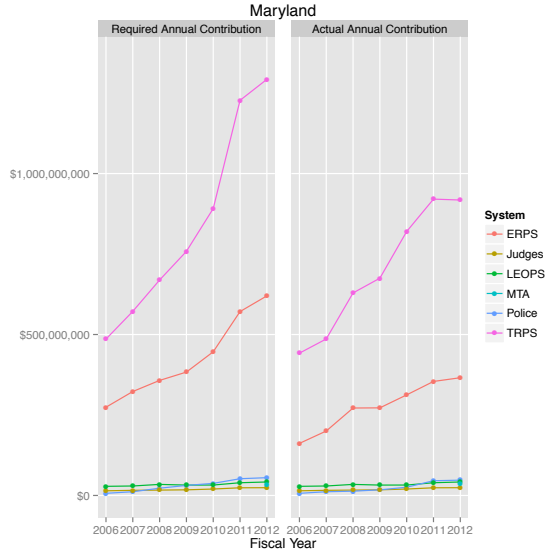
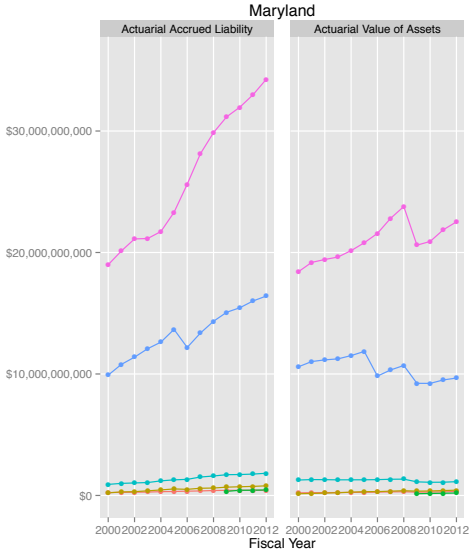
- the graphs of state systems use significantly different scales for both percentages and dollars compared to the local systems, due to the

significantly different nature and conditions of these systems.

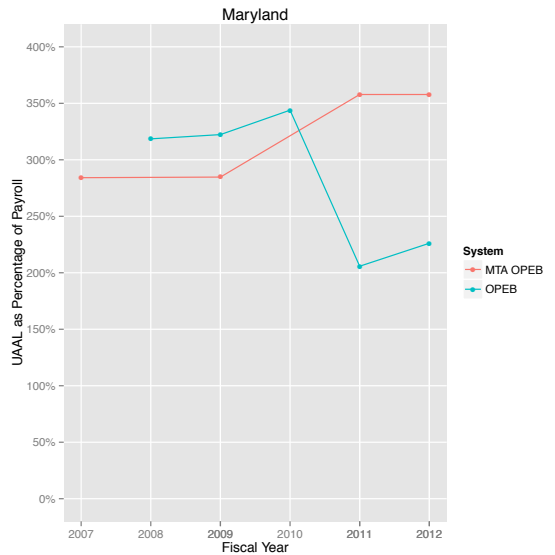
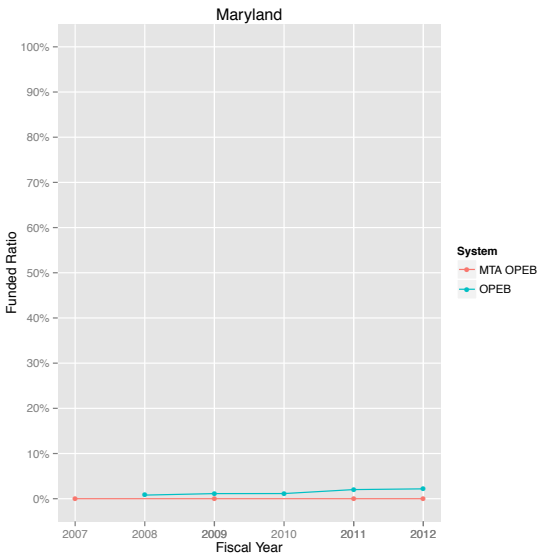
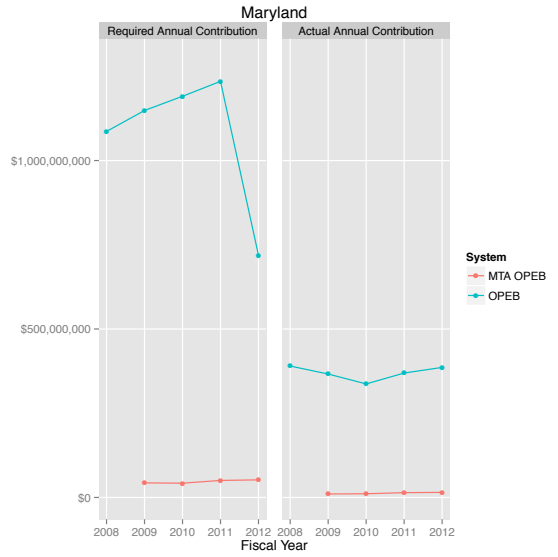
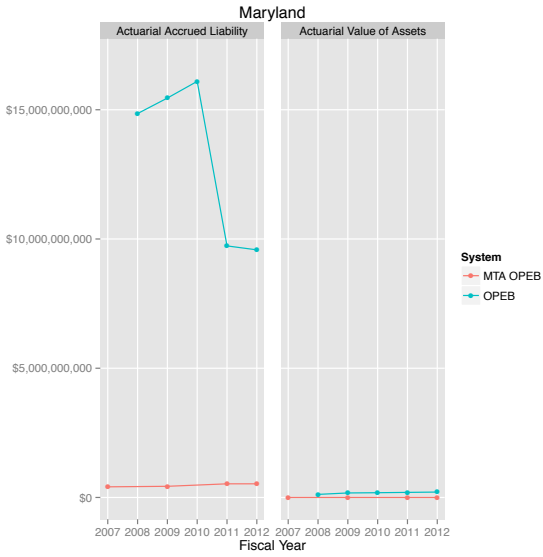
- the graphs of local systems use different scales for dollars due to the large differences in sizes between counties.
- the percentage scales used for local pension funds are the same, but differ from those used for local OPEB funds since OPEB funds are currently funded at a significantly lower level than pension funds.

GABRIEL J. MICHAEL is a senior fellow at *The Maryland Public Policy Institute* and a doctoral candidate in political science at *The George Washington University*. He holds master’s degrees from *The George Washington University* and *Yale University*, and a bachelor’s degree from the *University of Maryland, College Park*. He can be reached at gmichael@mdpolicy.org.

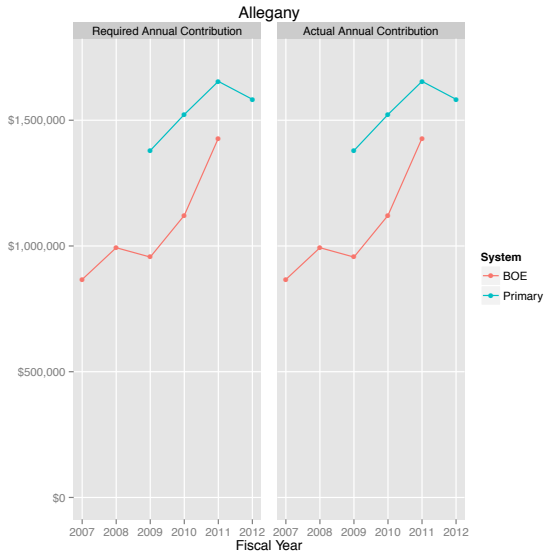
Perpetual Shortfall: Maryland's Pension and Benefit Funds



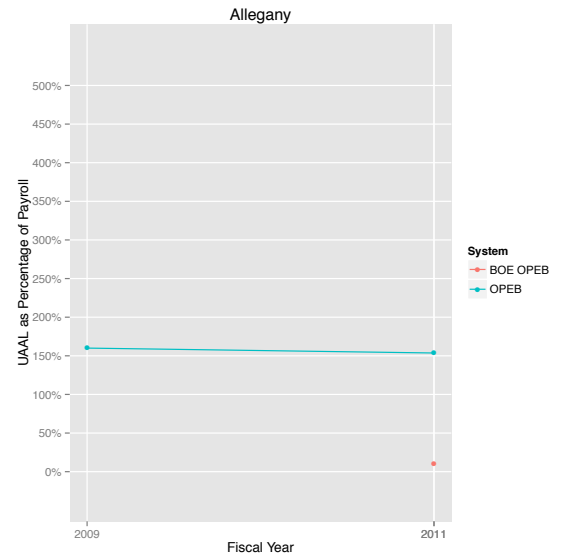
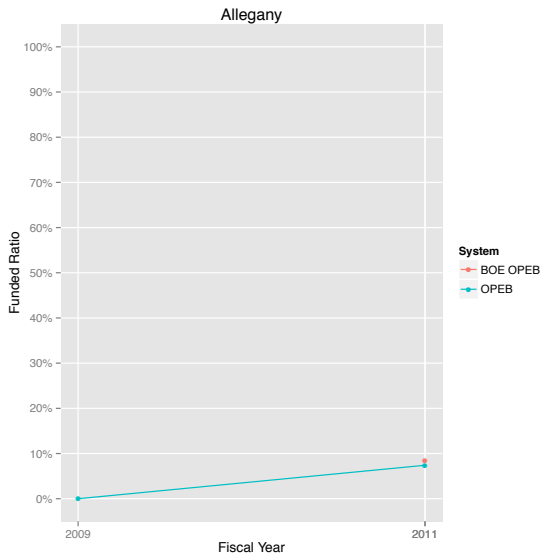
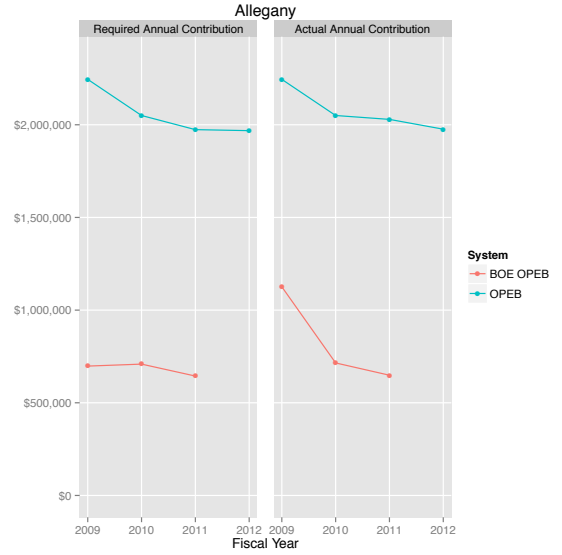
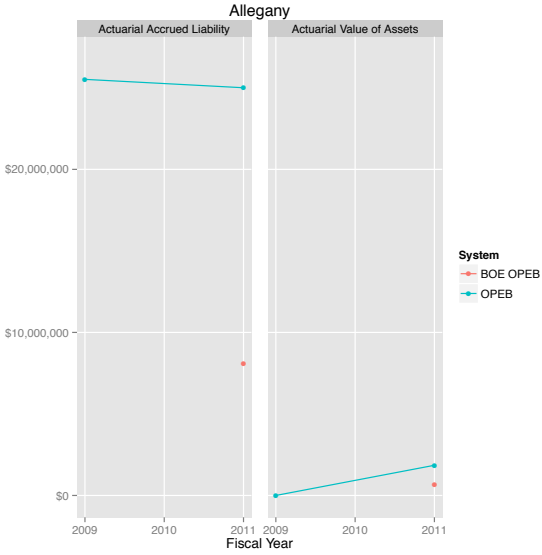
Perpetual Shortfall: Maryland's Pension and Benefit Funds



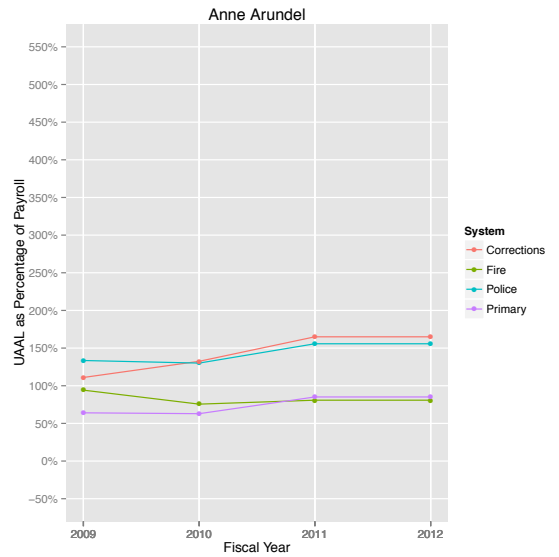
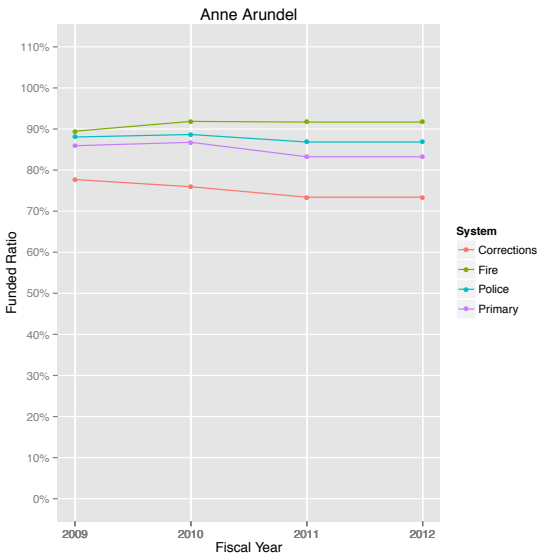
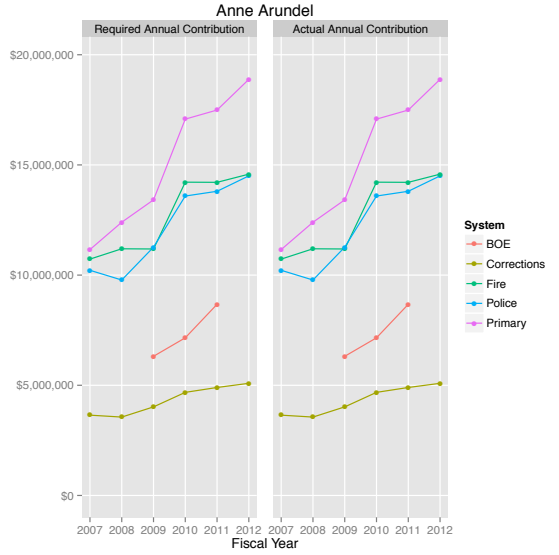
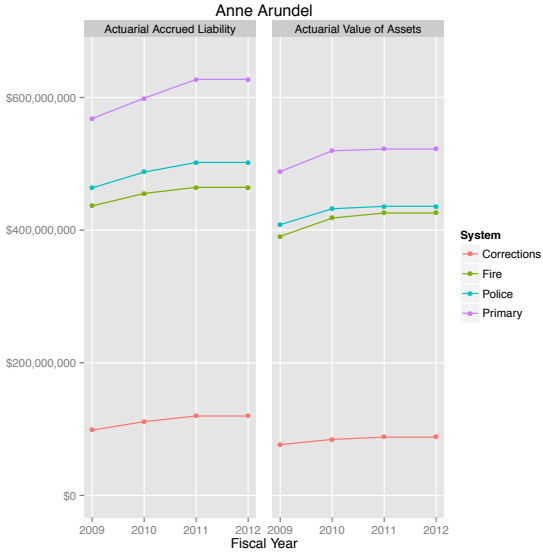
Perpetual Shortfall: Maryland's Pension and Benefit Funds



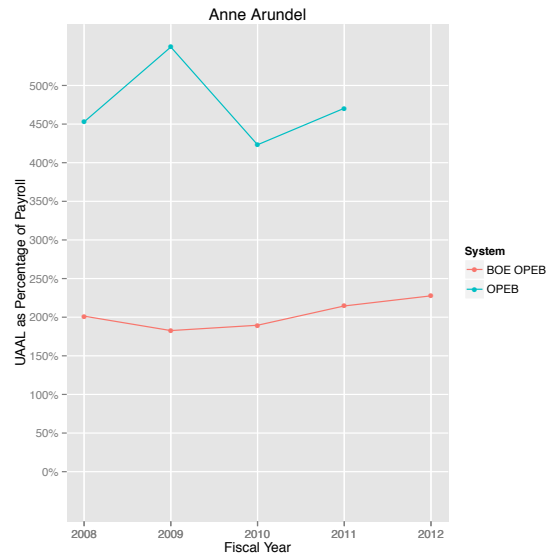
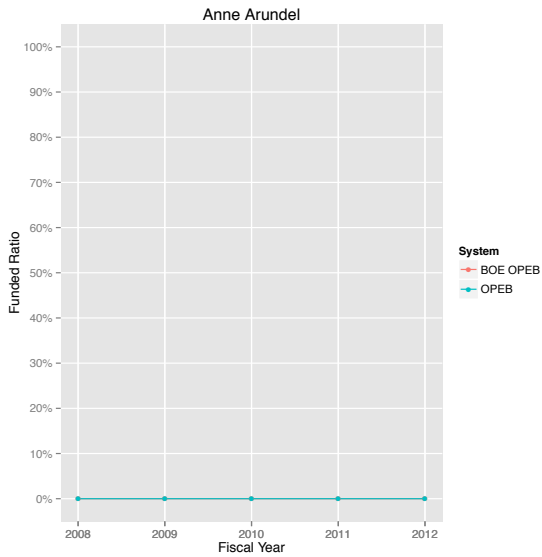
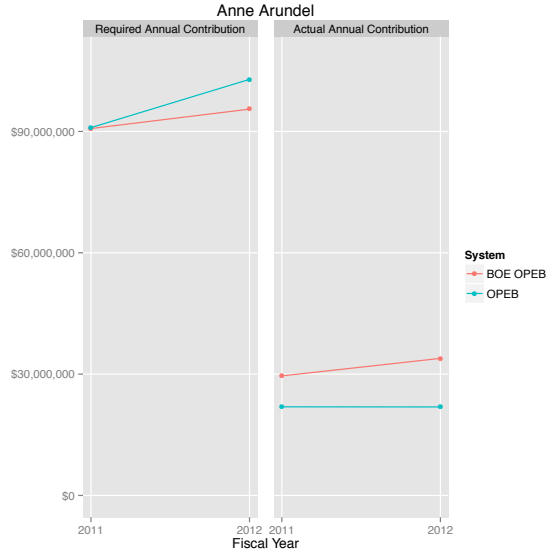
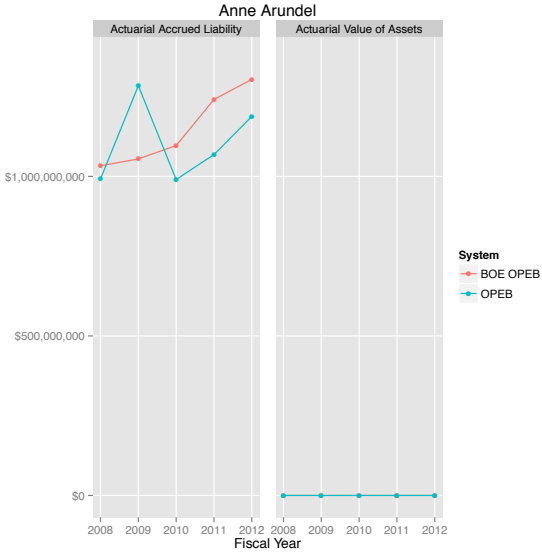
Perpetual Shortfall: Maryland's Pension and Benefit Funds



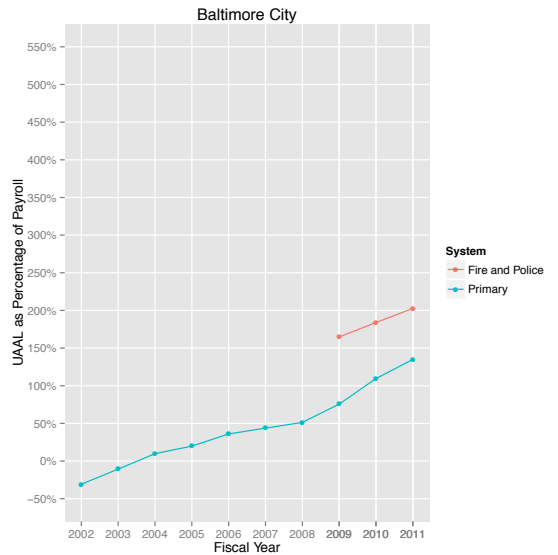
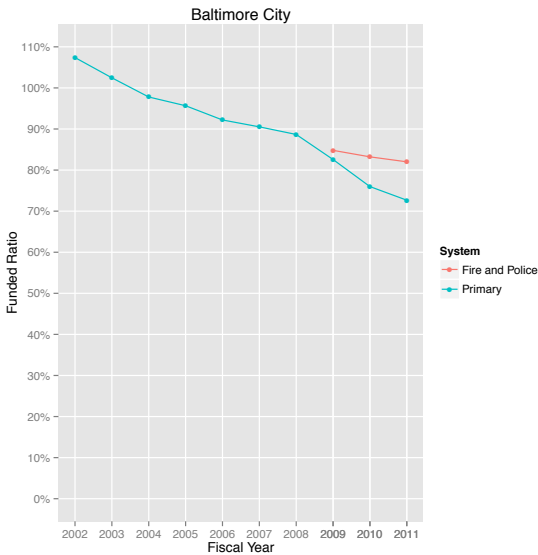
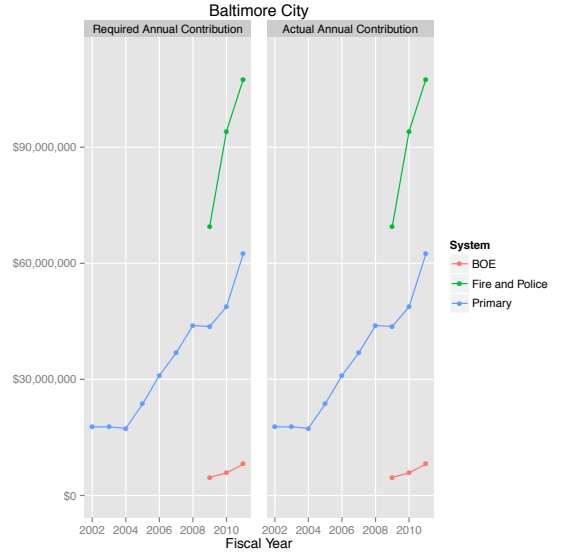
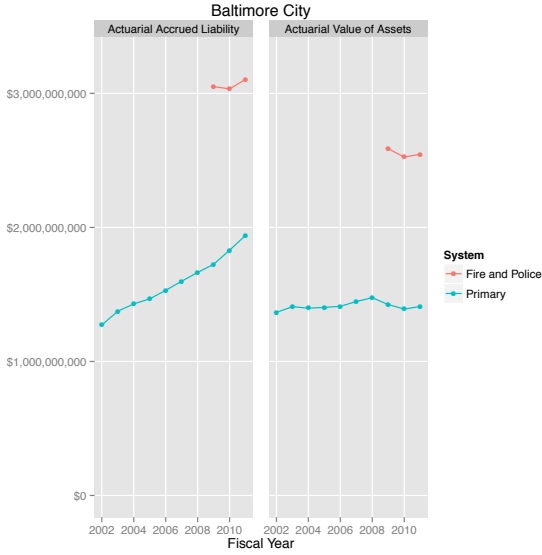
Perpetual Shortfall: Maryland's Pension and Benefit Funds



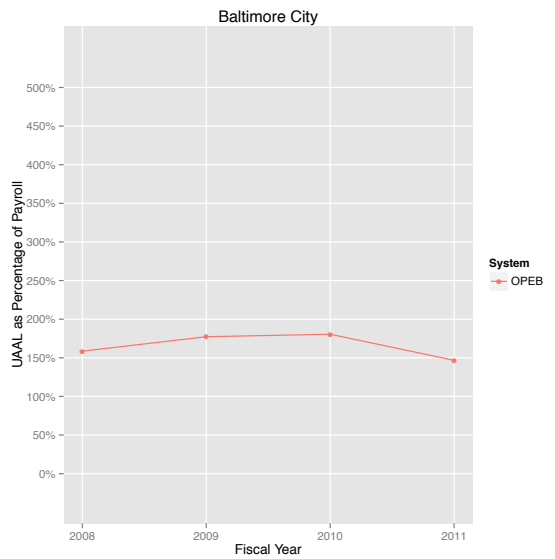
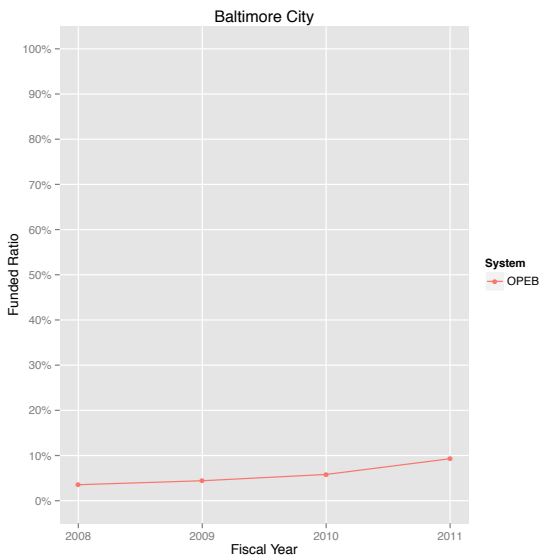
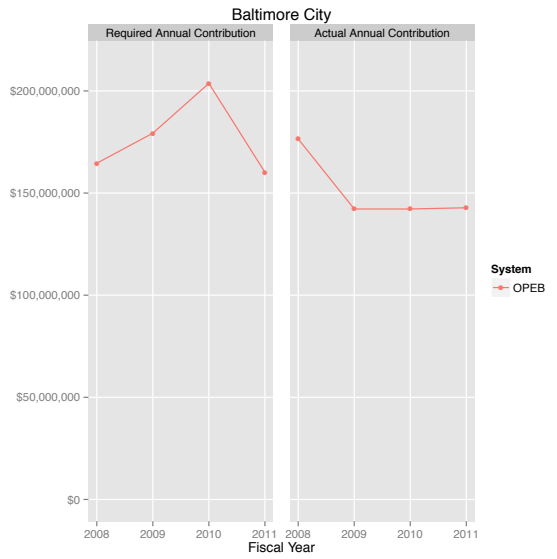
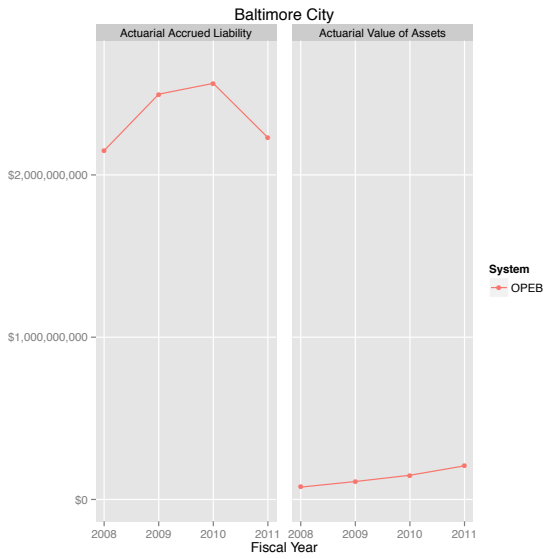
Perpetual Shortfall: Maryland's Pension and Benefit Funds



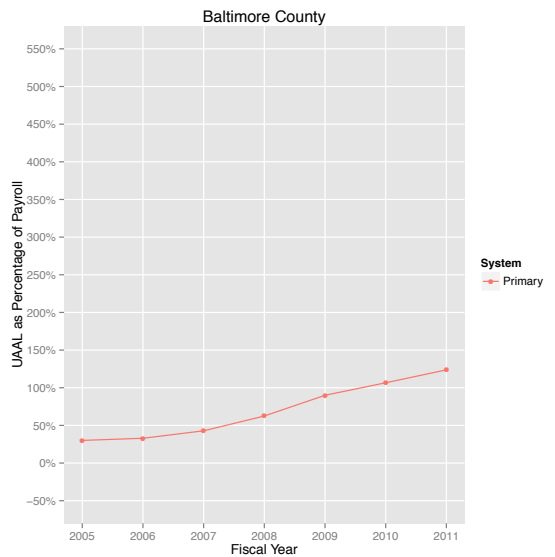
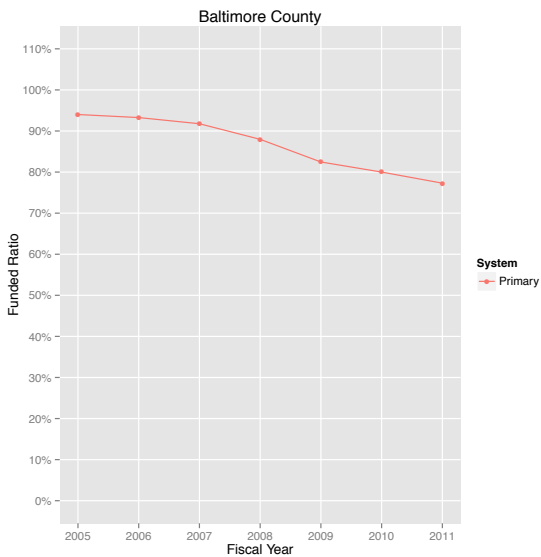
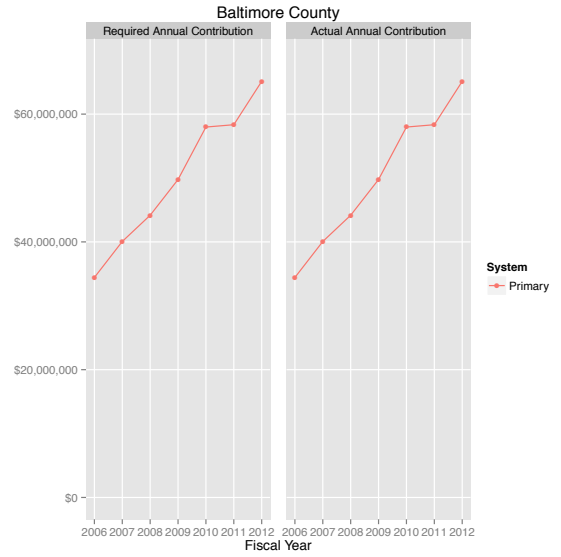
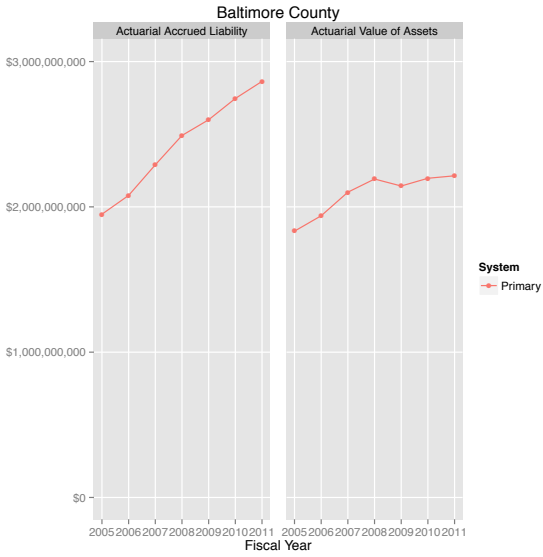
Perpetual Shortfall: Maryland's Pension and Benefit Funds



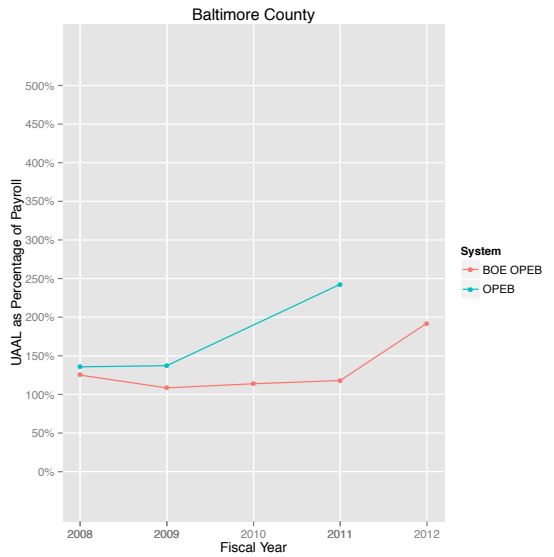
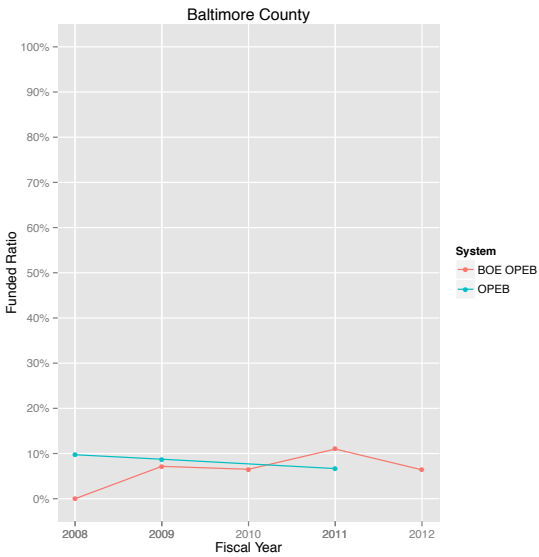
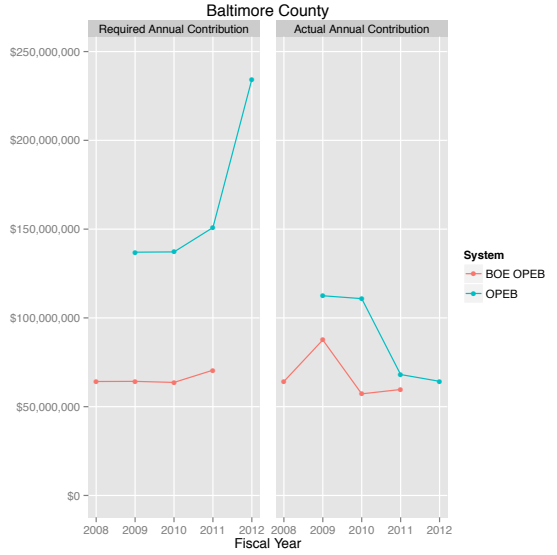
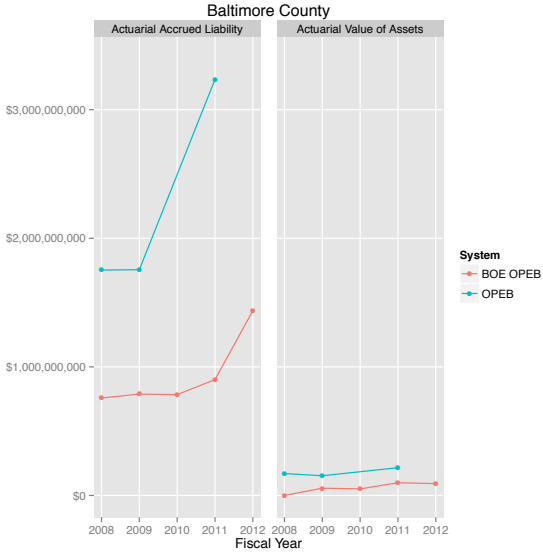
Perpetual Shortfall: Maryland's Pension and Benefit Funds



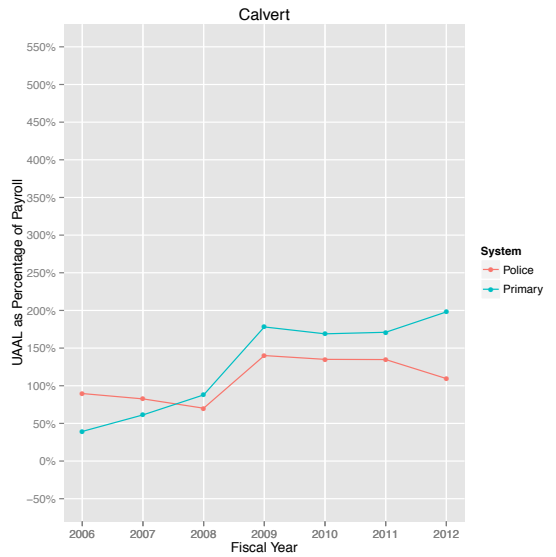
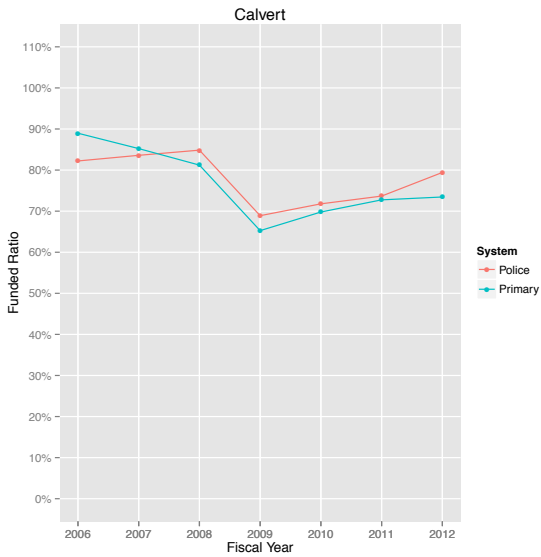
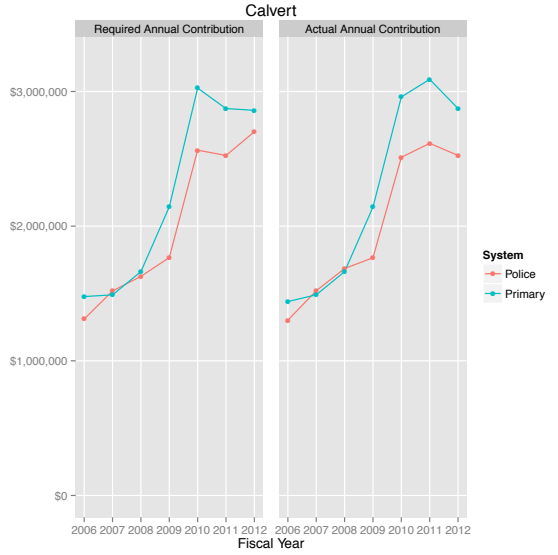
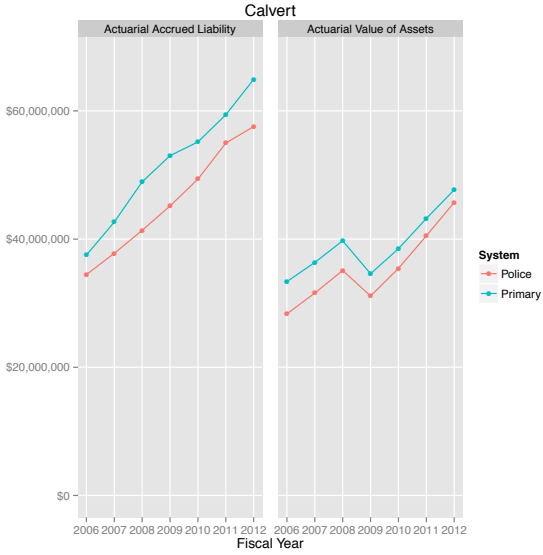
Perpetual Shortfall: Maryland's Pension and Benefit Funds



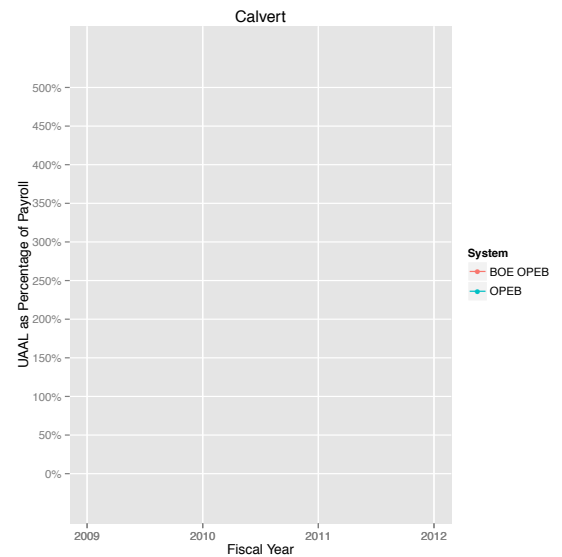
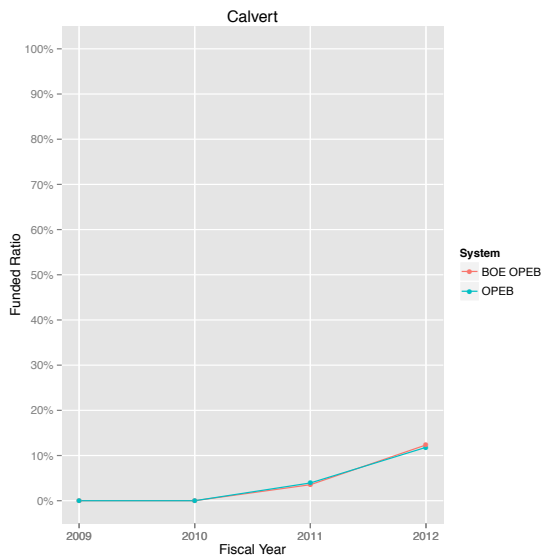
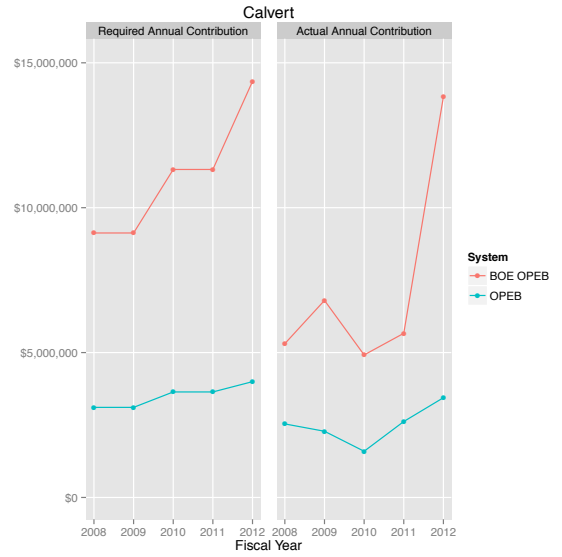
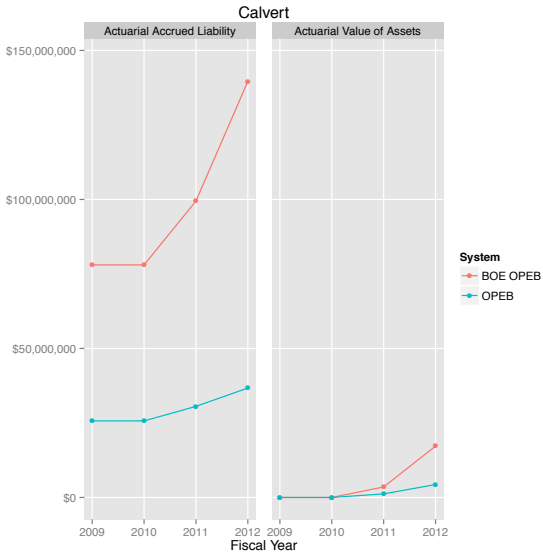
Perpetual Shortfall: Maryland's Pension and Benefit Funds



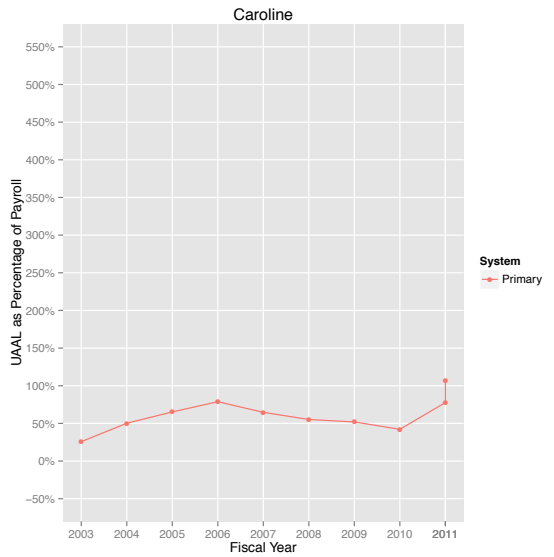
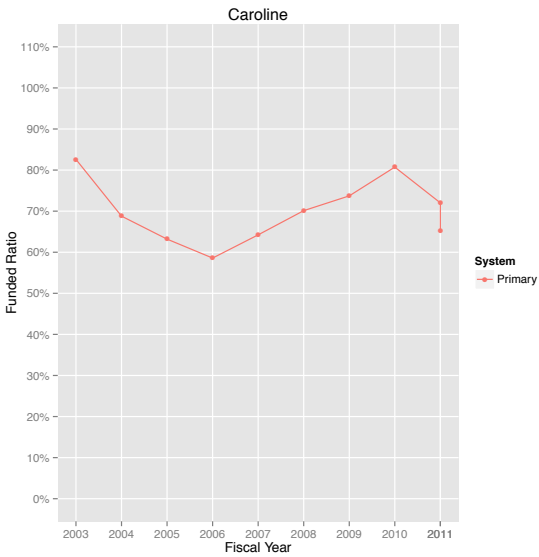
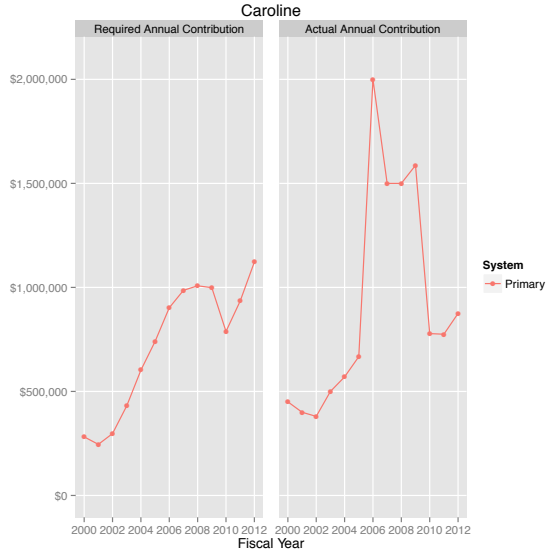
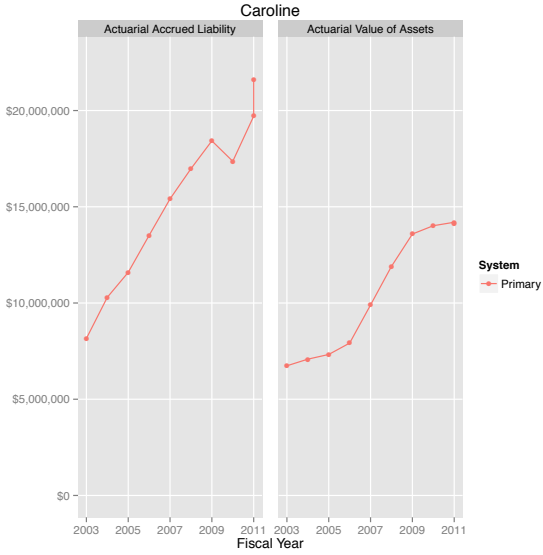
Perpetual Shortfall: Maryland's Pension and Benefit Funds



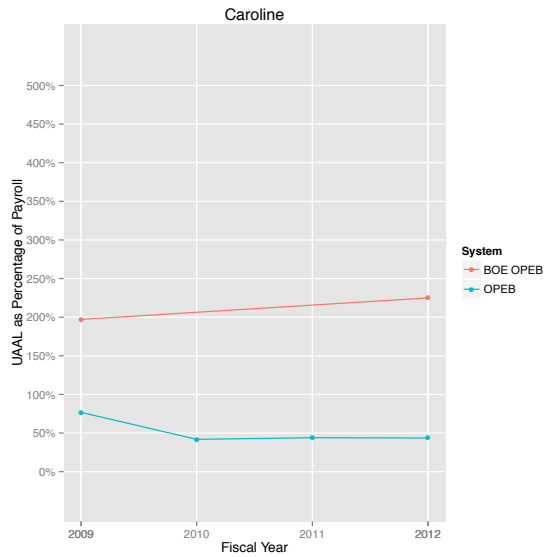
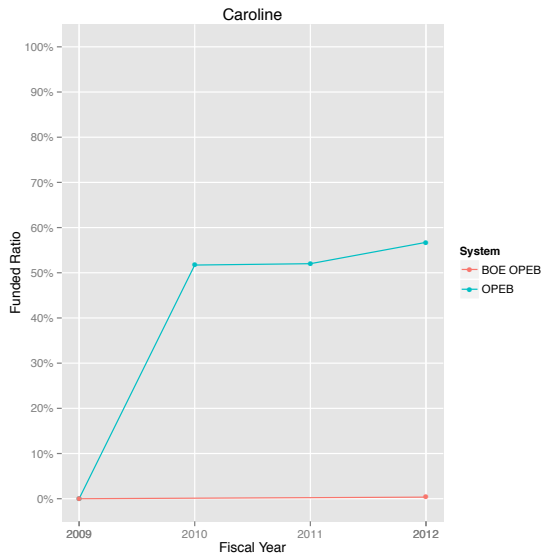
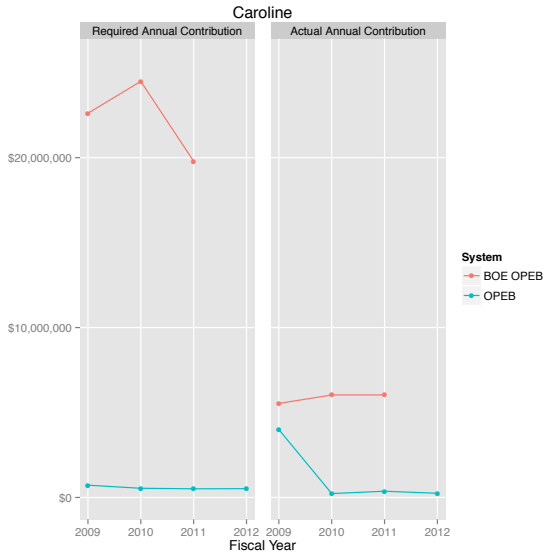
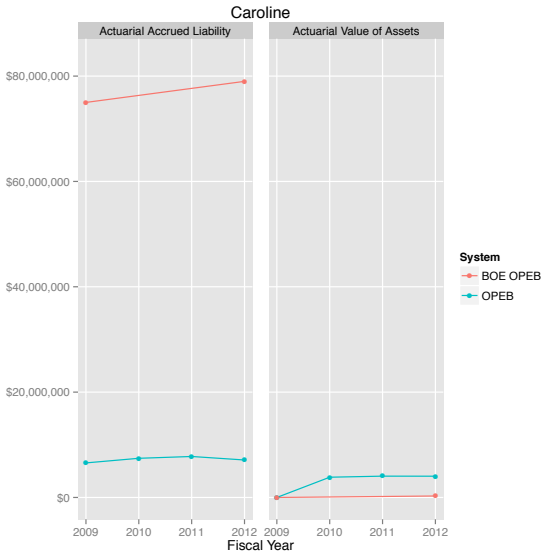
Perpetual Shortfall: Maryland's Pension and Benefit Funds



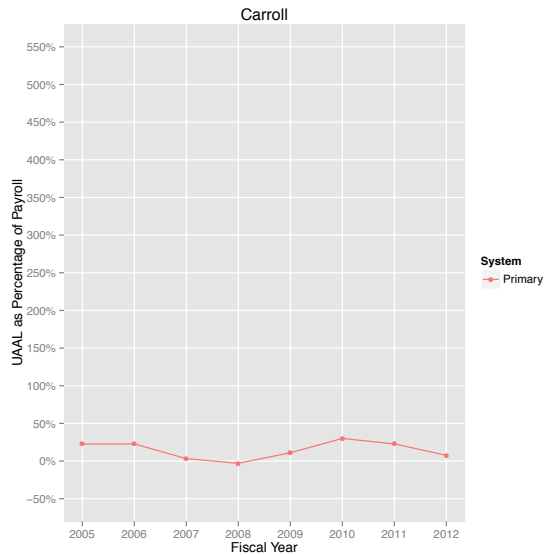
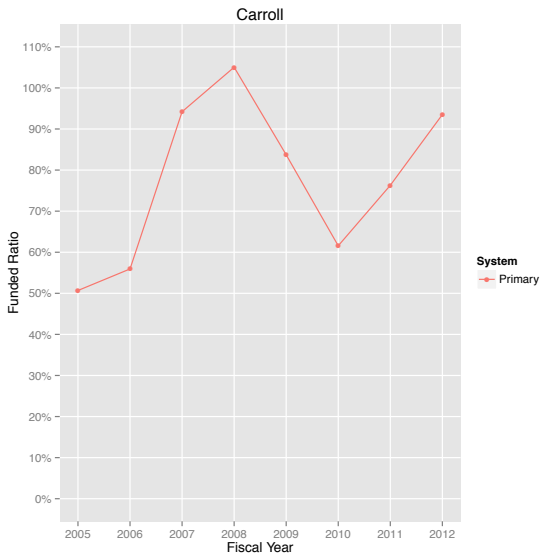
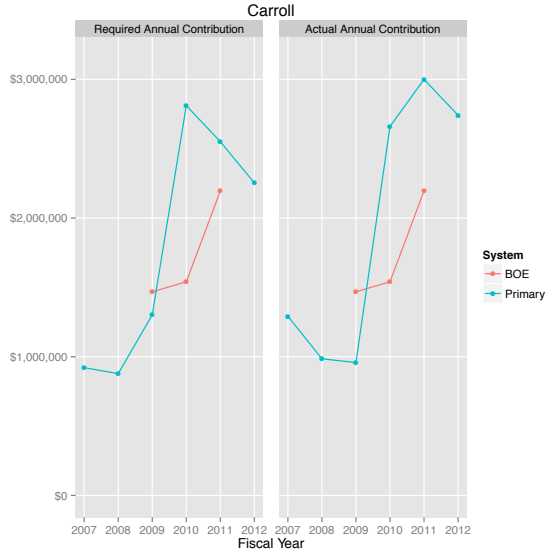
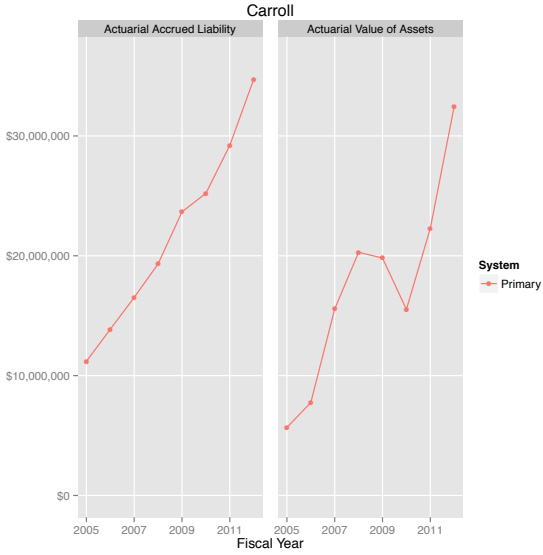
Perpetual Shortfall: Maryland's Pension and Benefit Funds



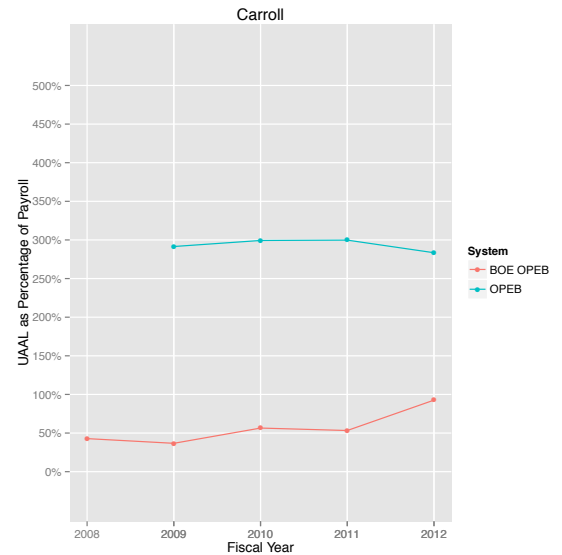
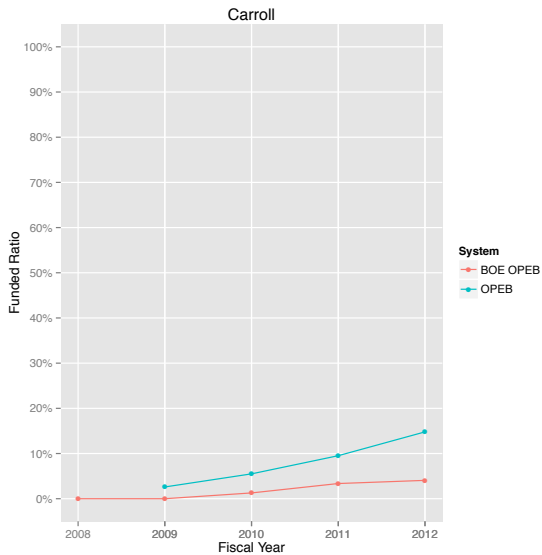
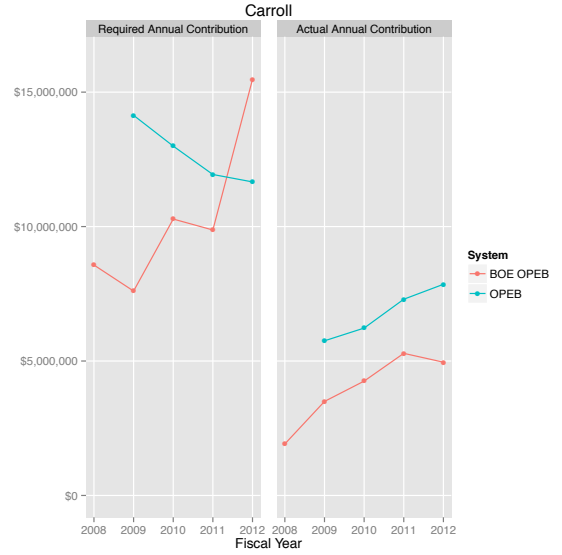
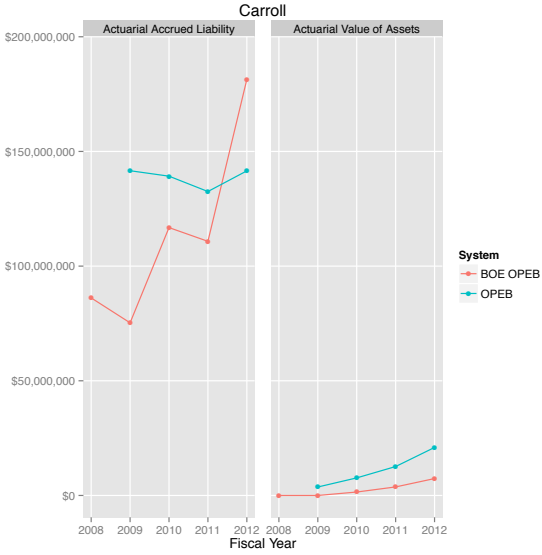
Perpetual Shortfall: Maryland's Pension and Benefit Funds



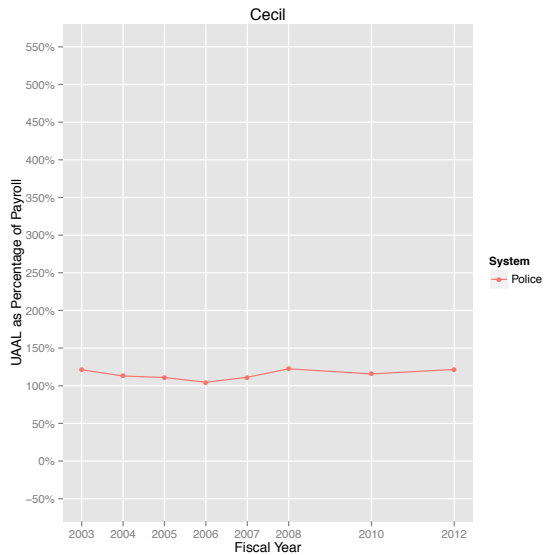
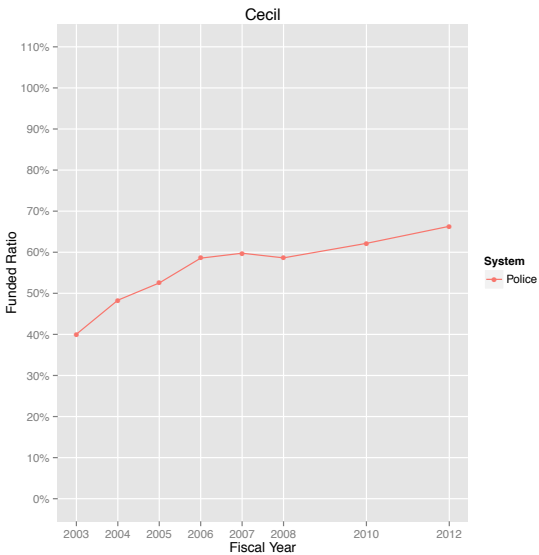
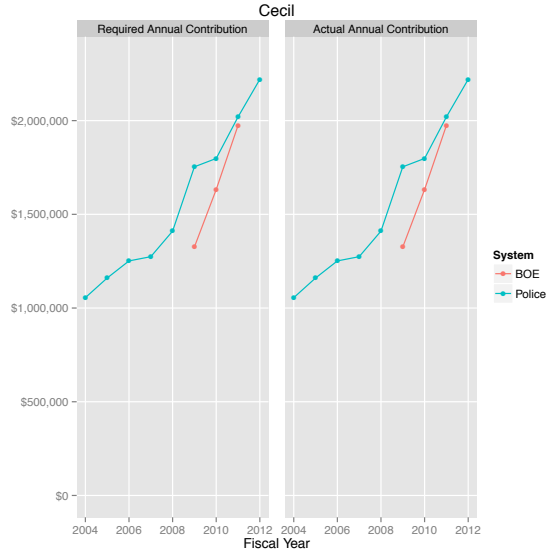
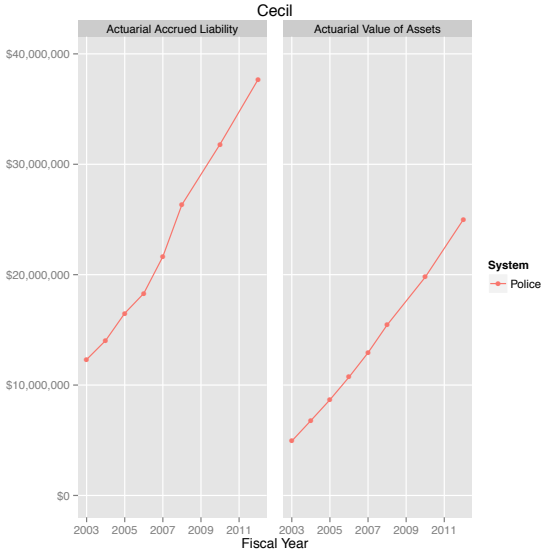
Perpetual Shortfall: Maryland's Pension and Benefit Funds



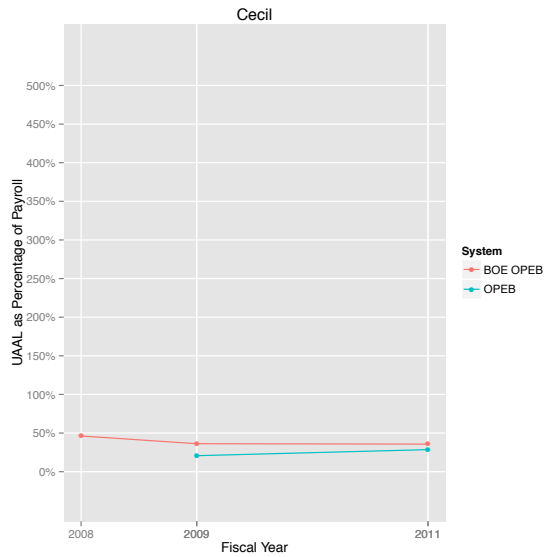
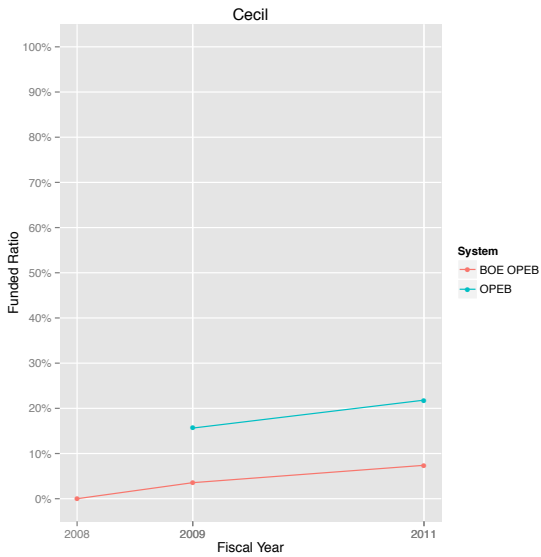
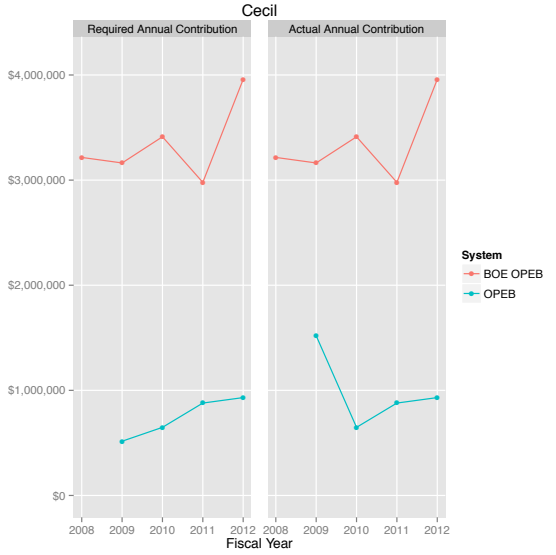
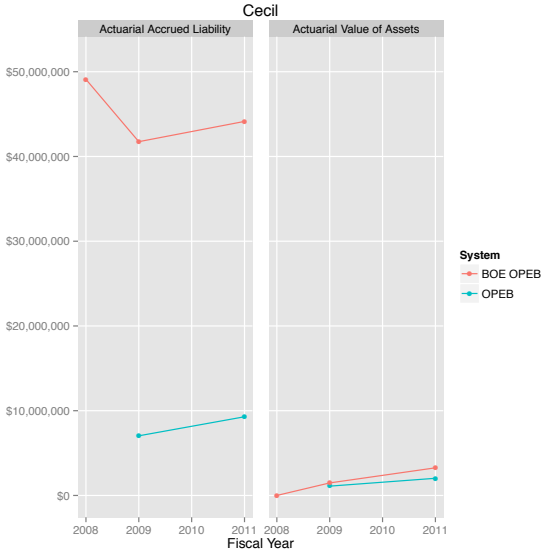
Perpetual Shortfall: Maryland's Pension and Benefit Funds



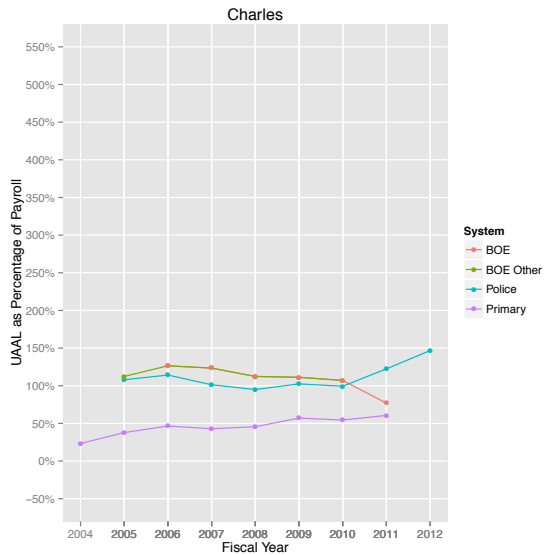
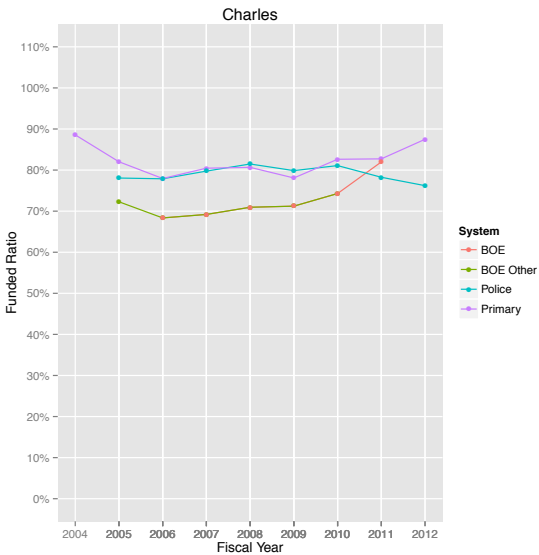
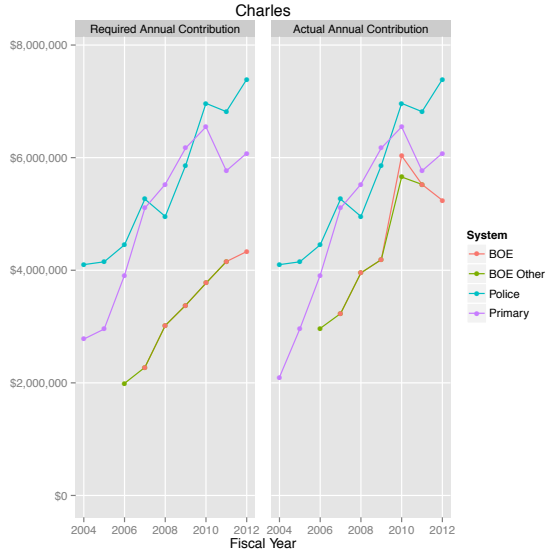
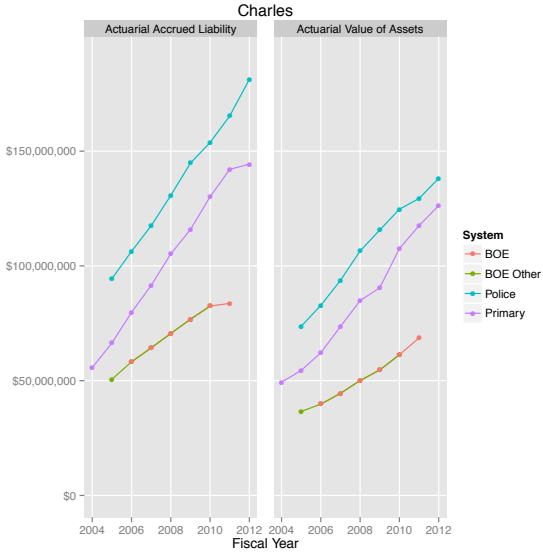
Perpetual Shortfall: Maryland's Pension and Benefit Funds



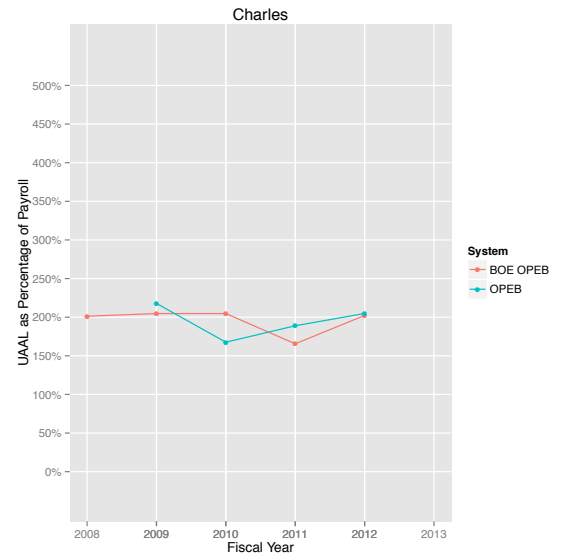
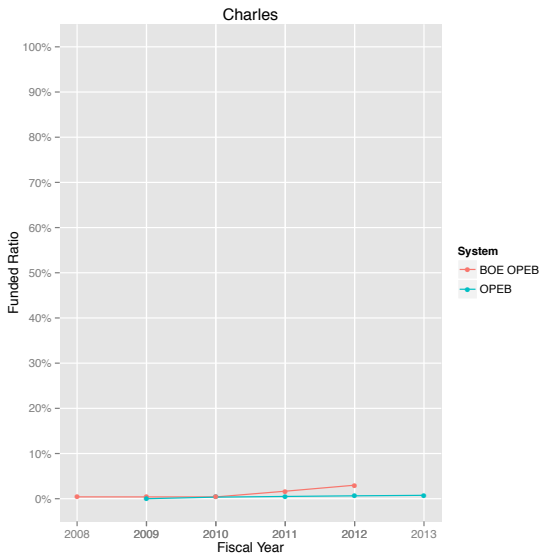
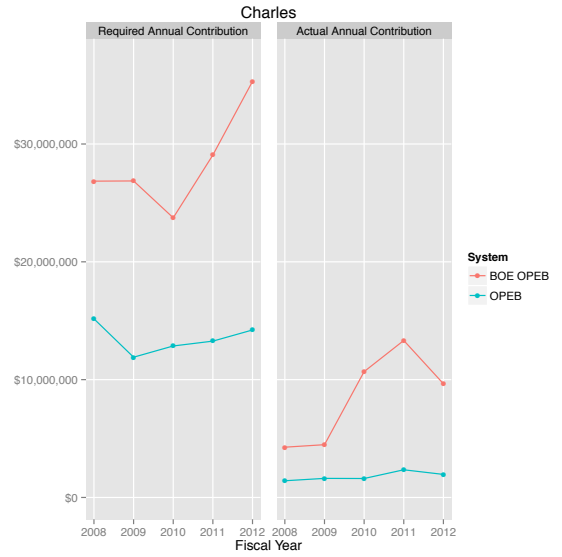
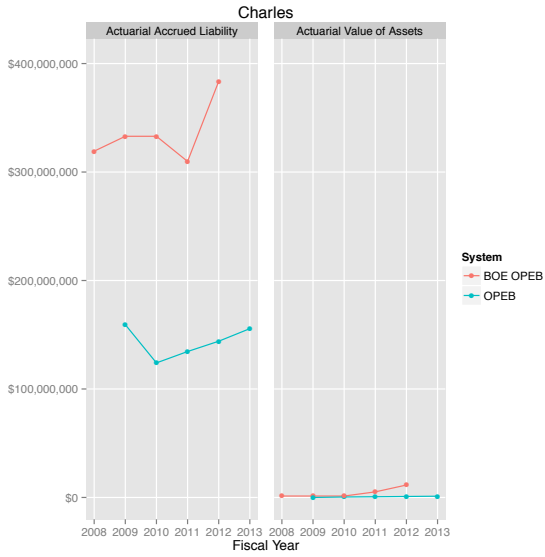
Perpetual Shortfall: Maryland's Pension and Benefit Funds



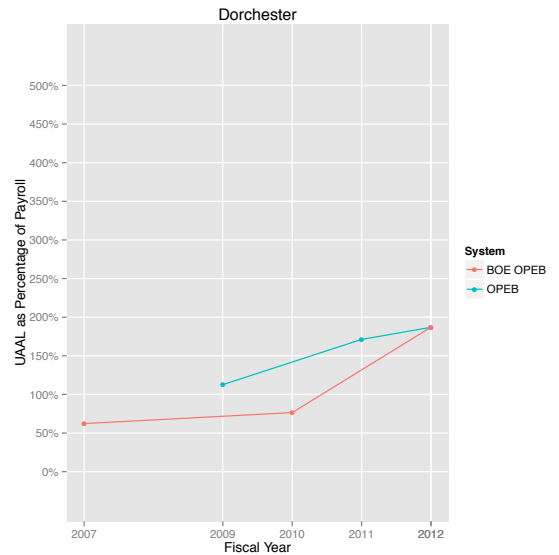
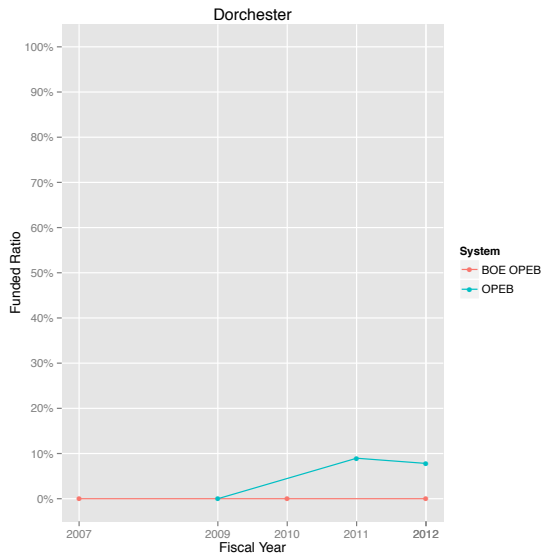
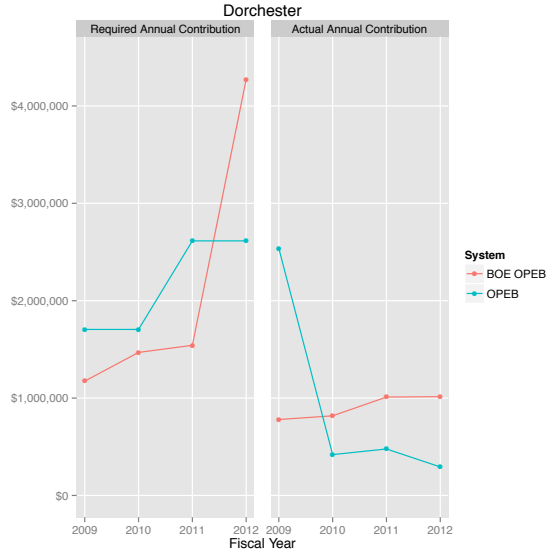
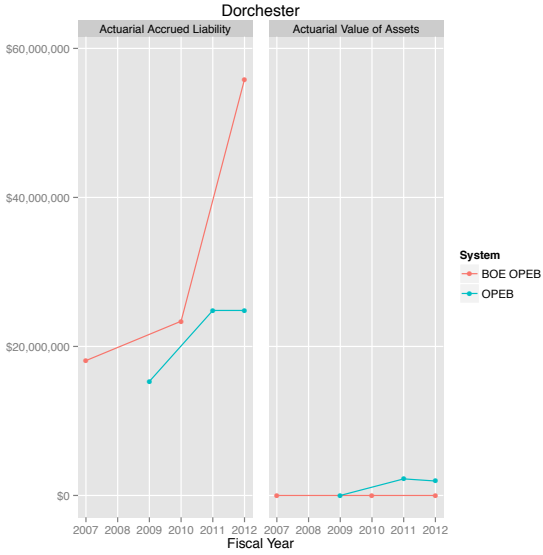
Perpetual Shortfall: Maryland's Pension and Benefit Funds



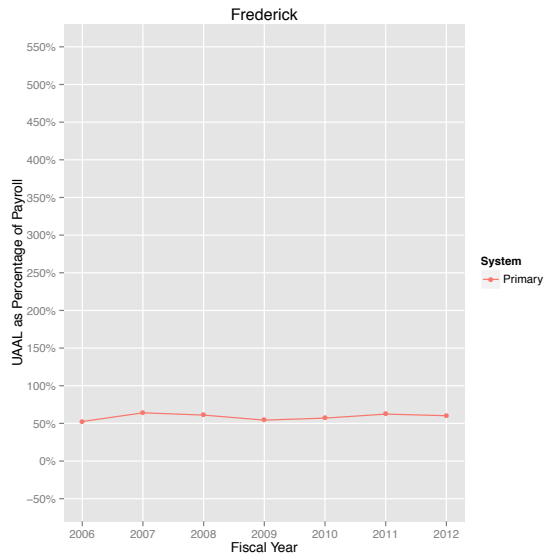
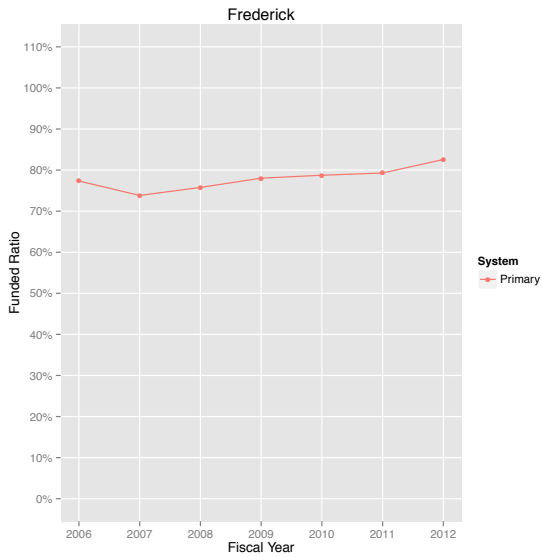
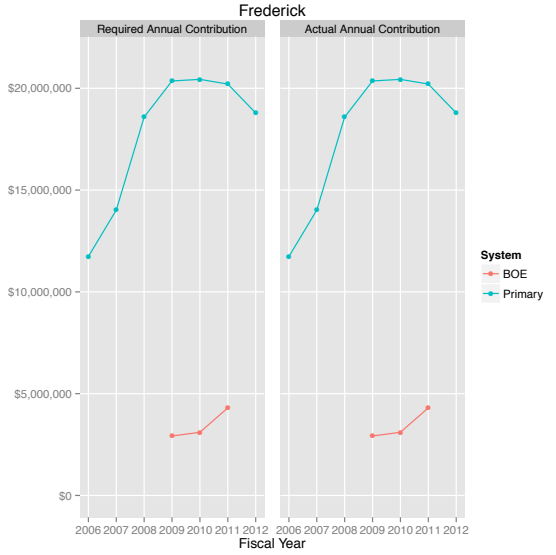
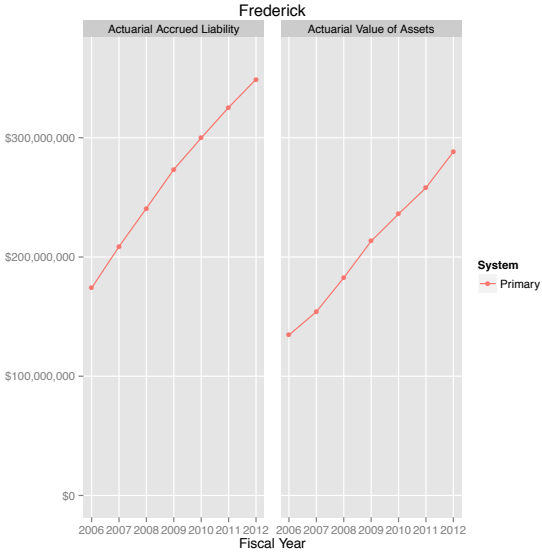
Perpetual Shortfall: Maryland's Pension and Benefit Funds



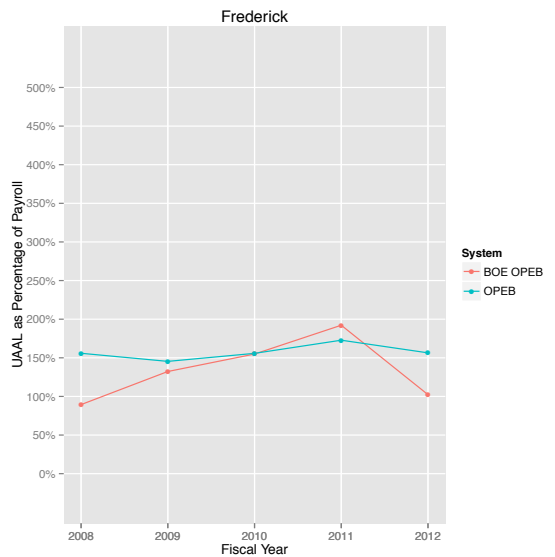
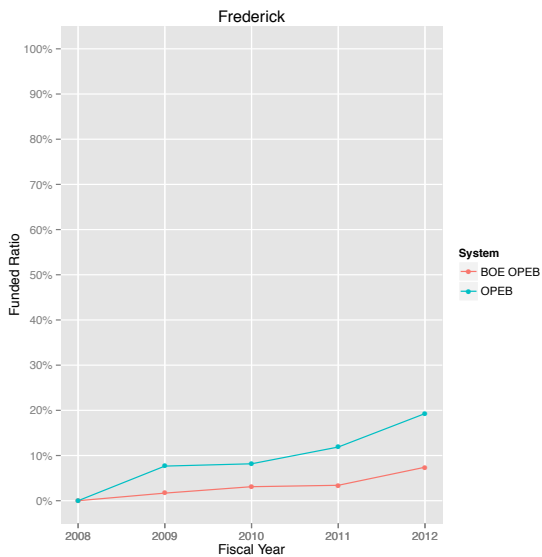
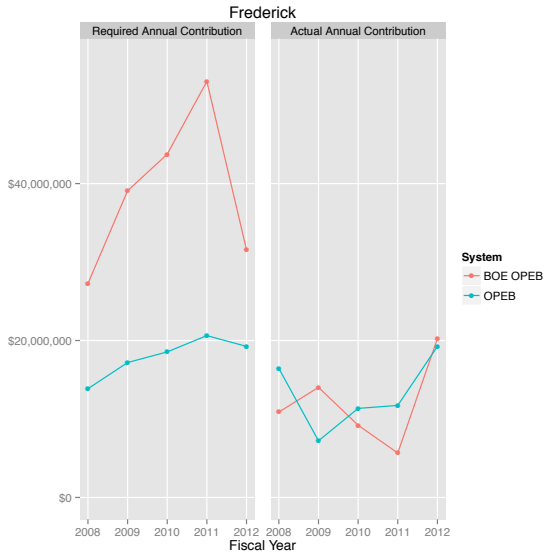
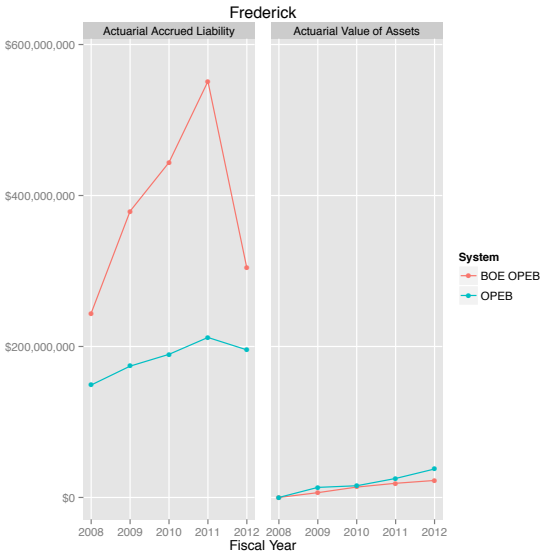
Perpetual Shortfall: Maryland's Pension and Benefit Funds



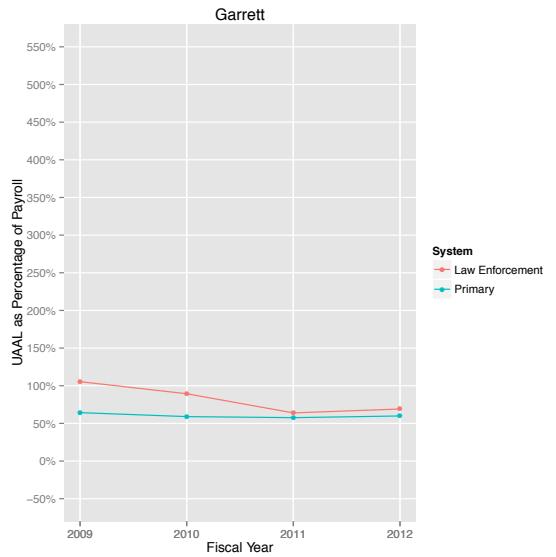
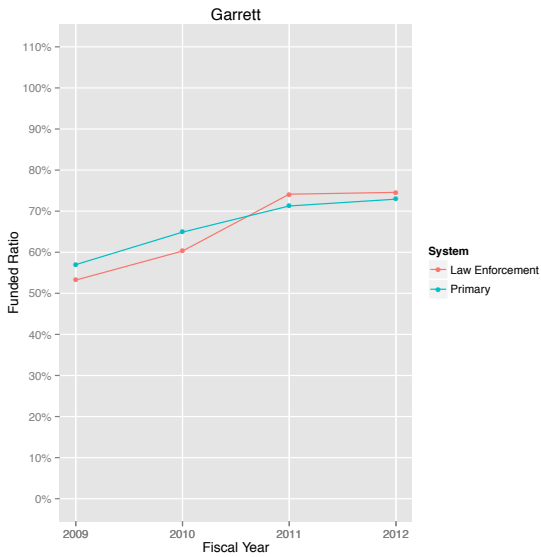
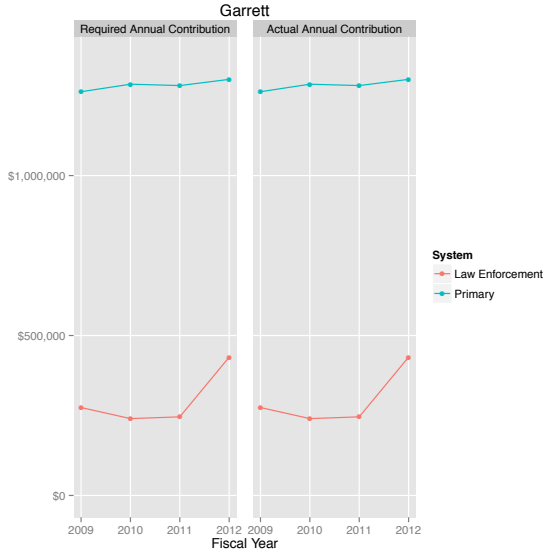
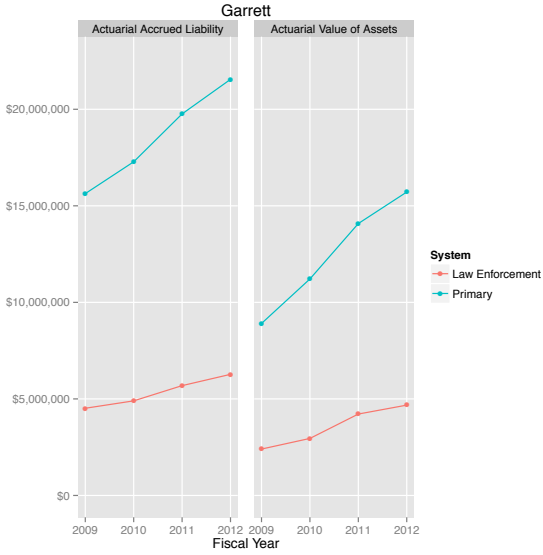
Perpetual Shortfall: Maryland's Pension and Benefit Funds



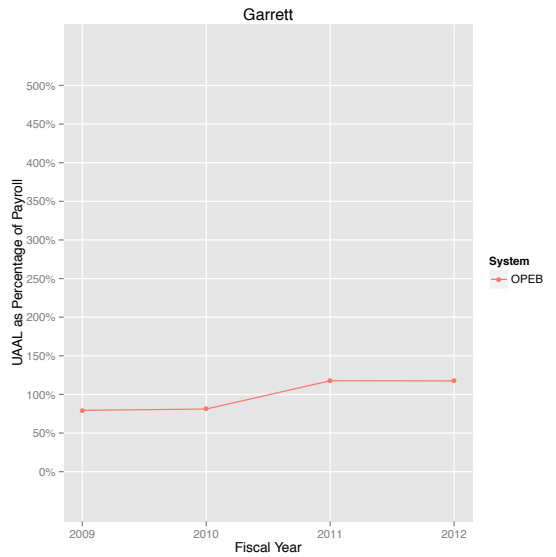
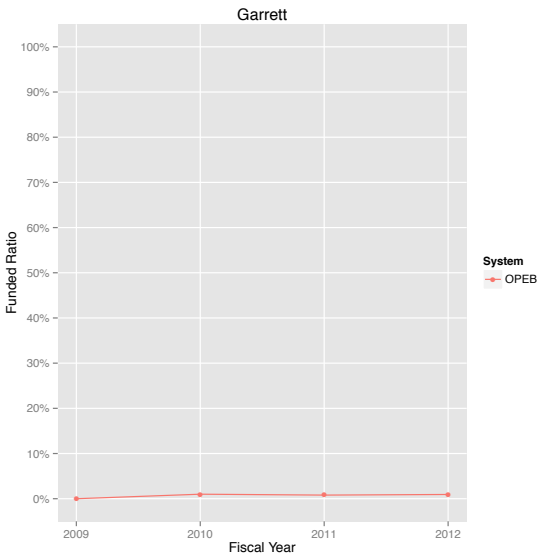
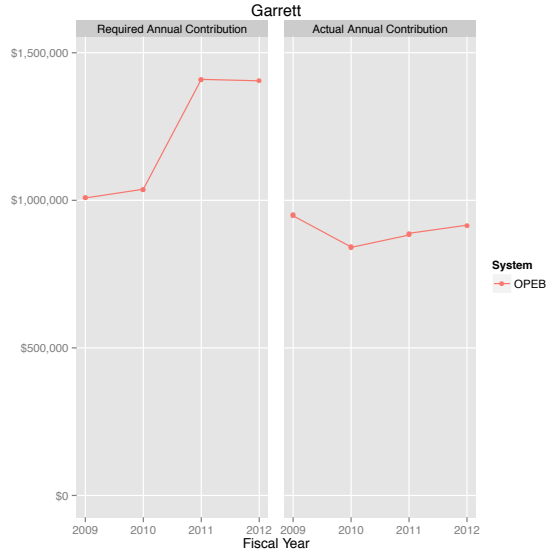
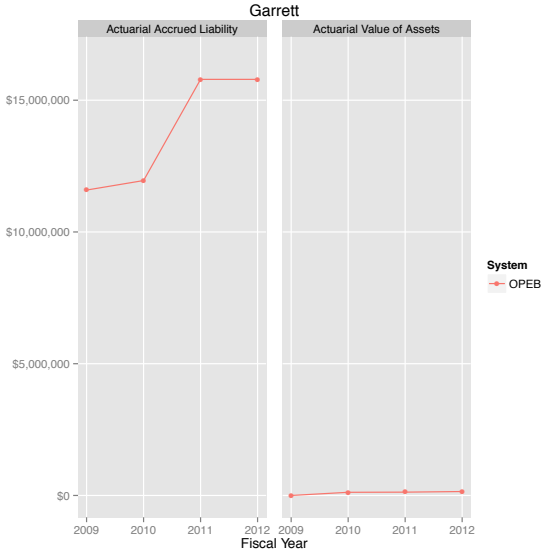
Perpetual Shortfall: Maryland's Pension and Benefit Funds



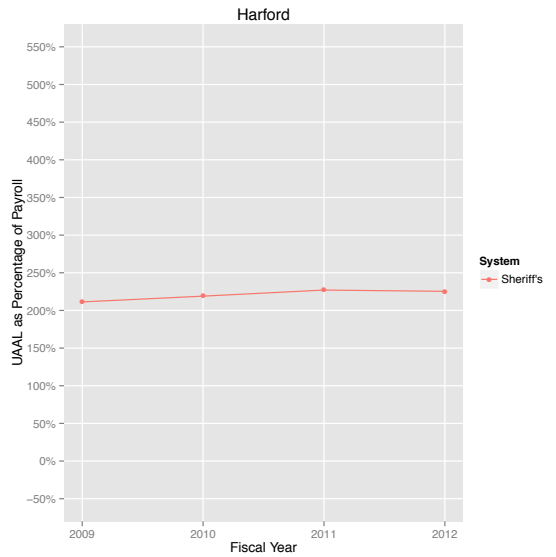
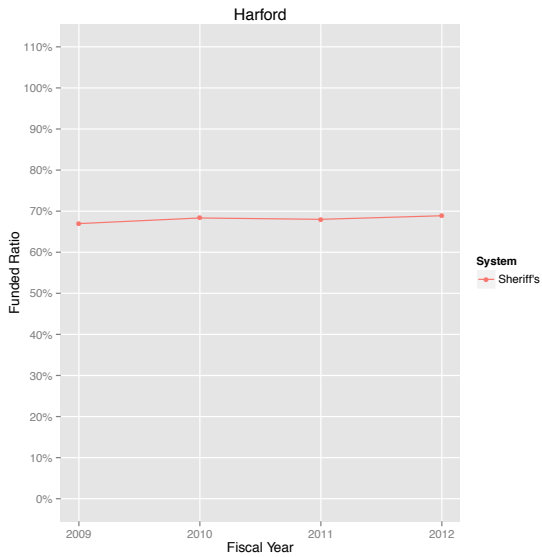
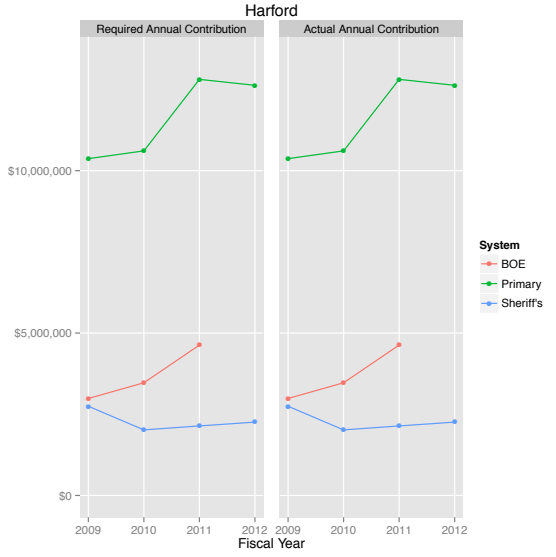
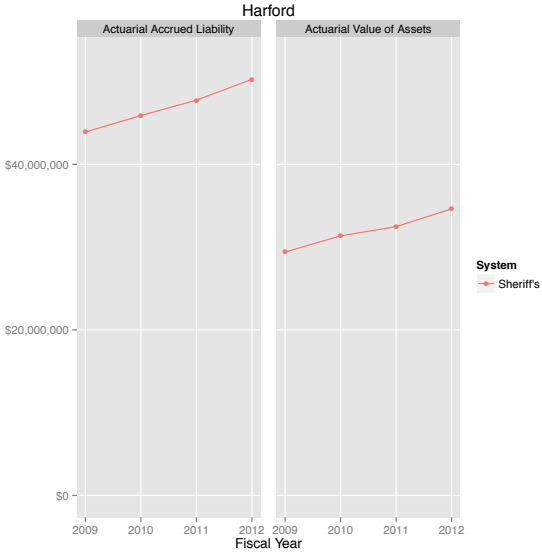
Perpetual Shortfall: Maryland's Pension and Benefit Funds



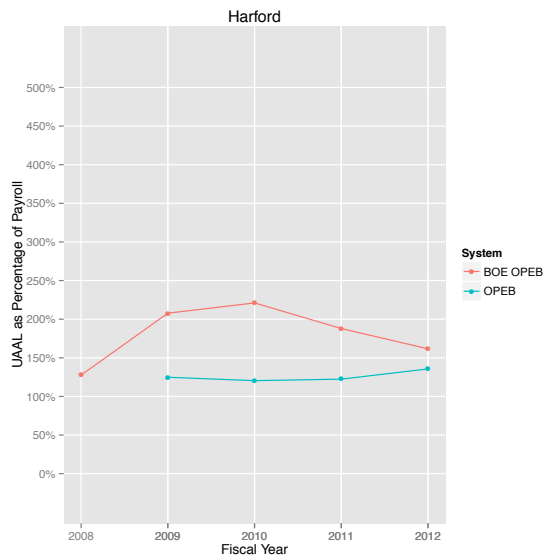
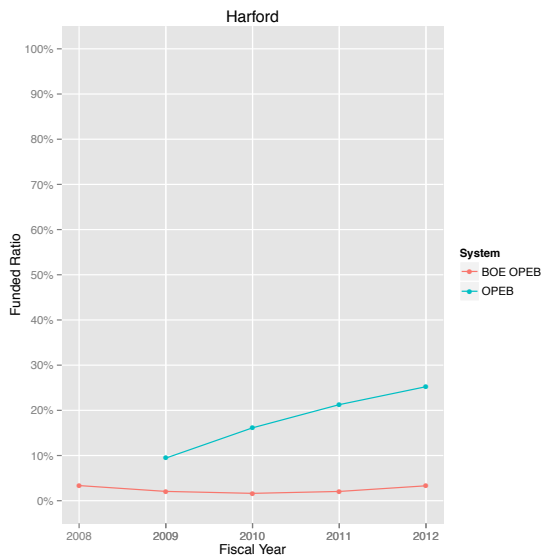
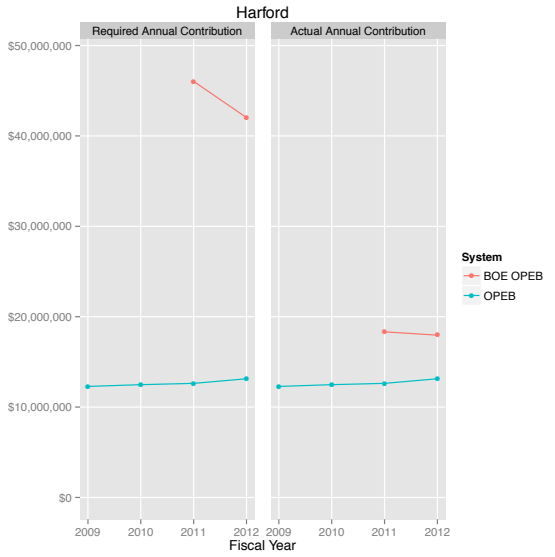
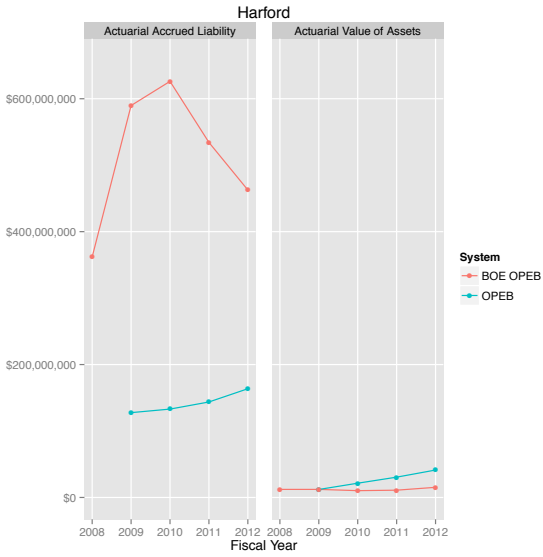
Perpetual Shortfall: Maryland's Pension and Benefit Funds



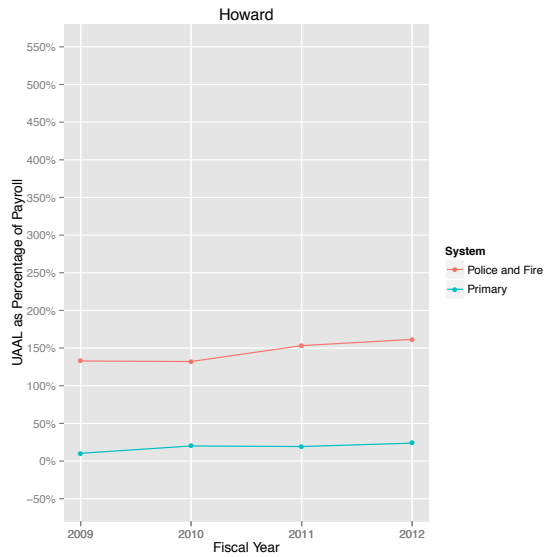
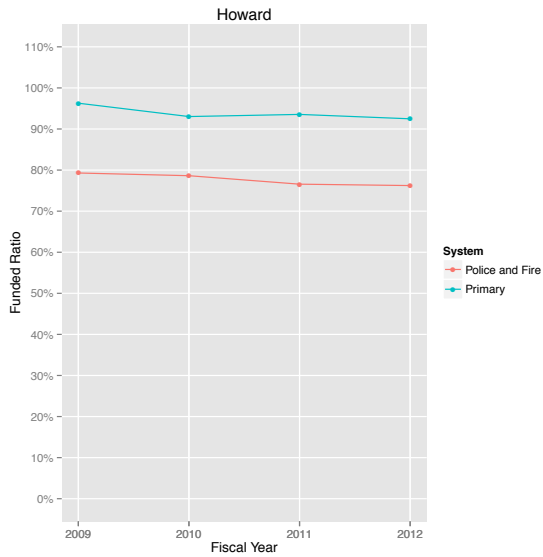
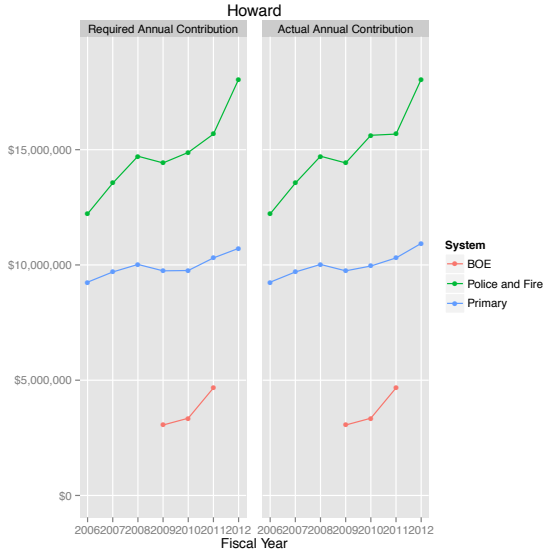
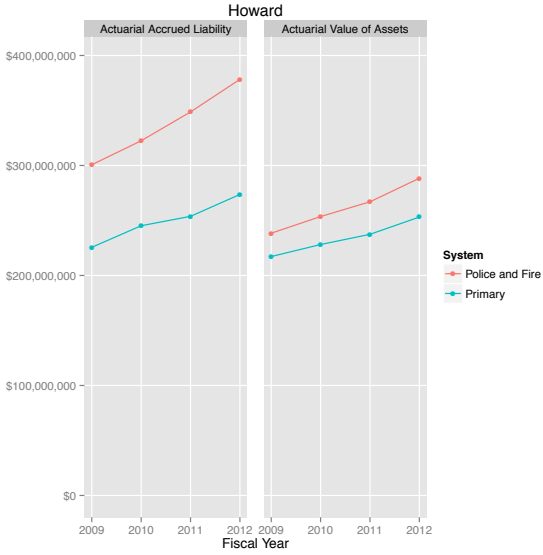
Perpetual Shortfall: Maryland's Pension and Benefit Funds



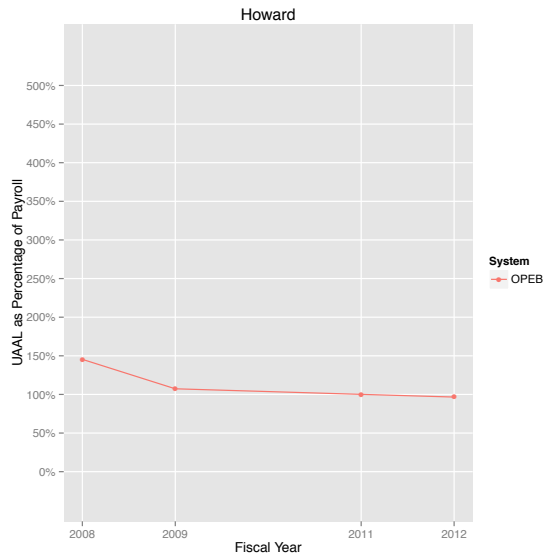
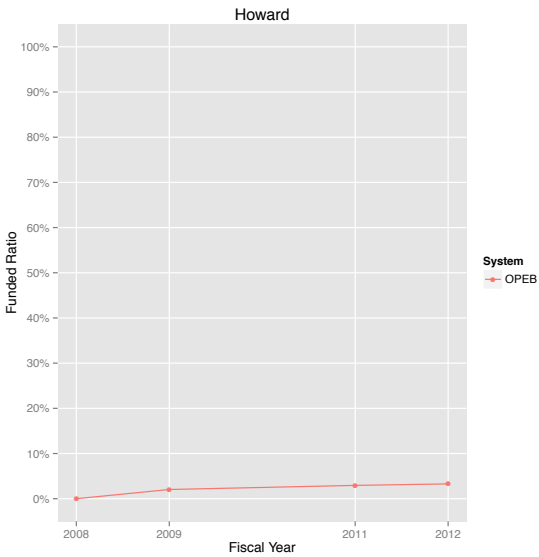
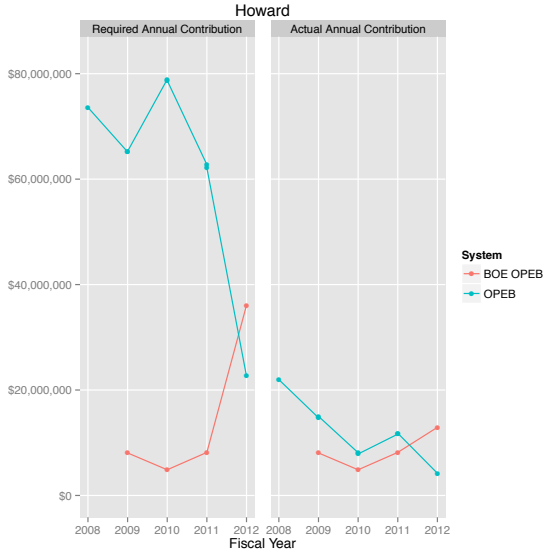
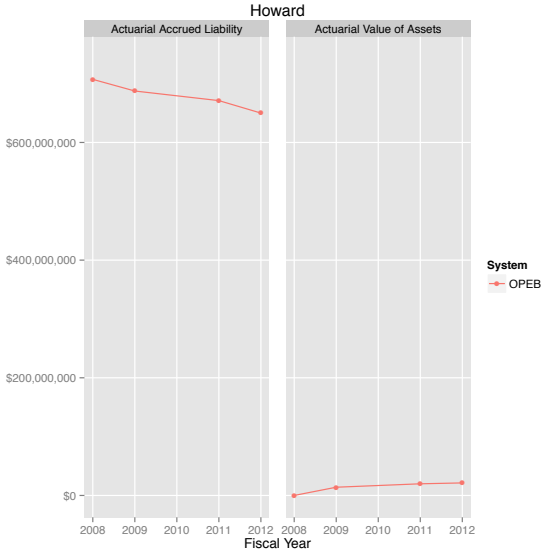
Perpetual Shortfall: Maryland's Pension and Benefit Funds

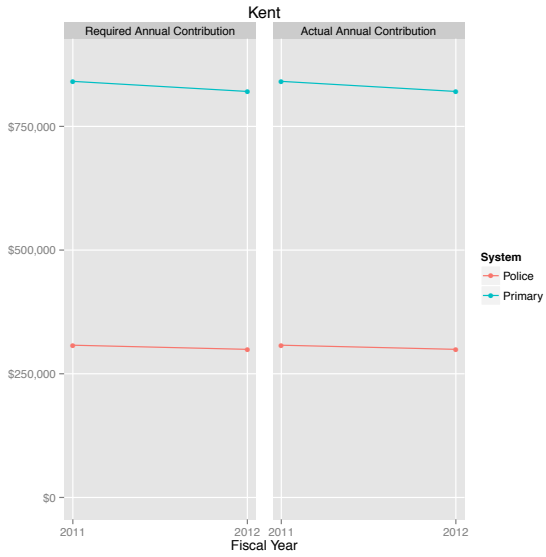


Perpetual Shortfall: Maryland's Pension and Benefit Funds

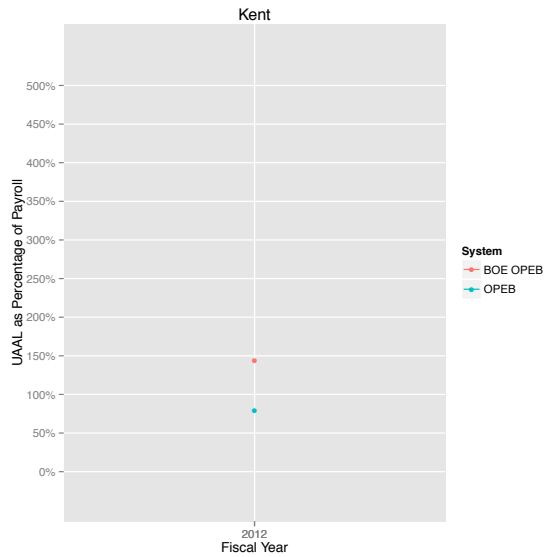
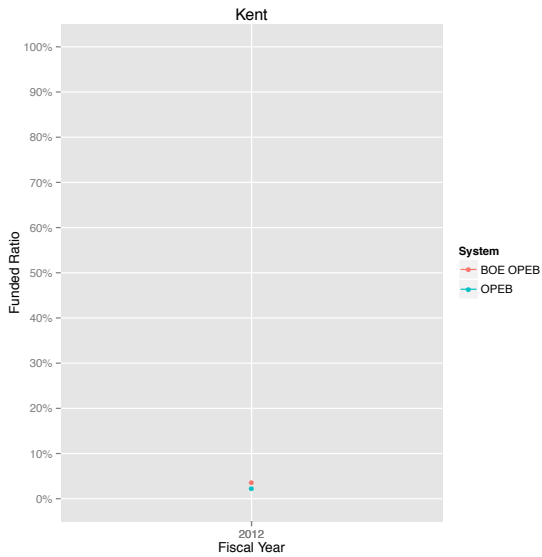
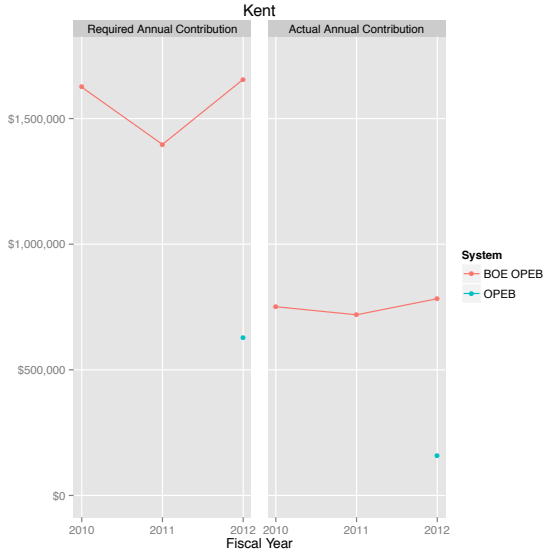
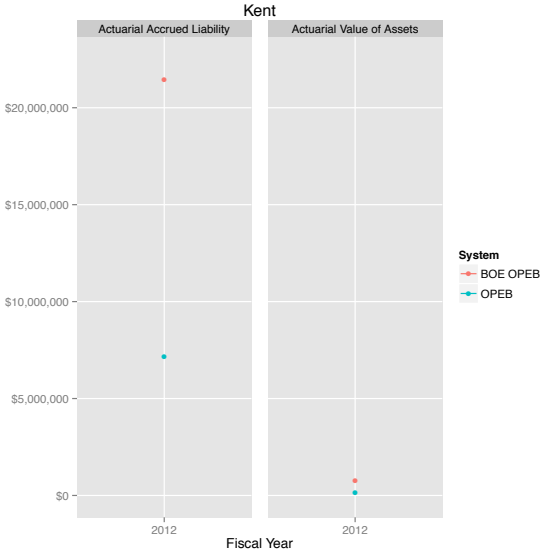


Perpetual Shortfall: Maryland's Pension and Benefit Funds

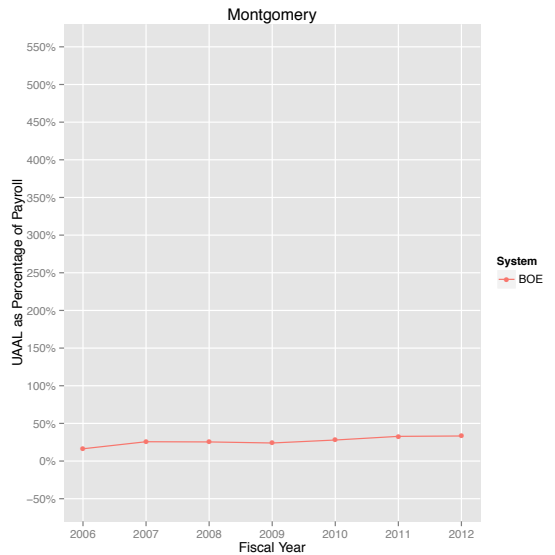
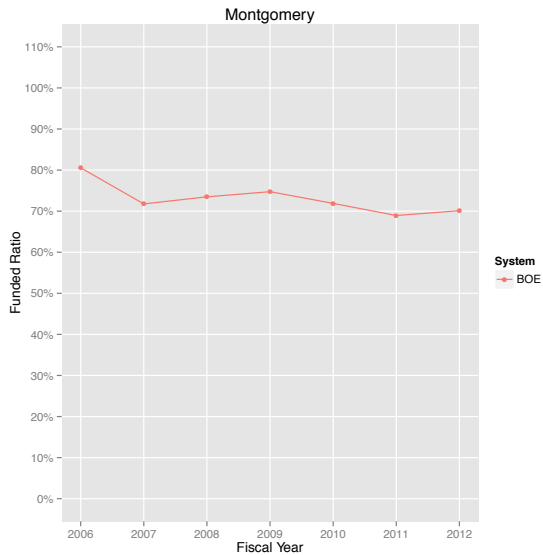
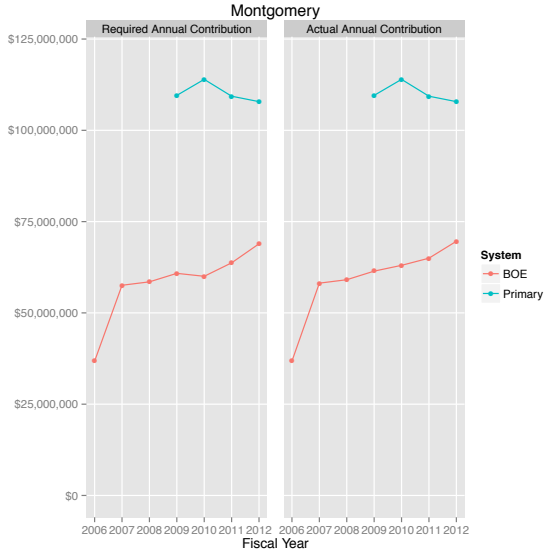
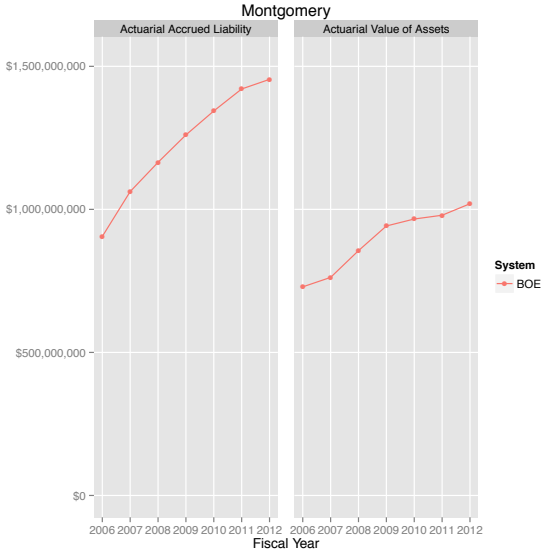




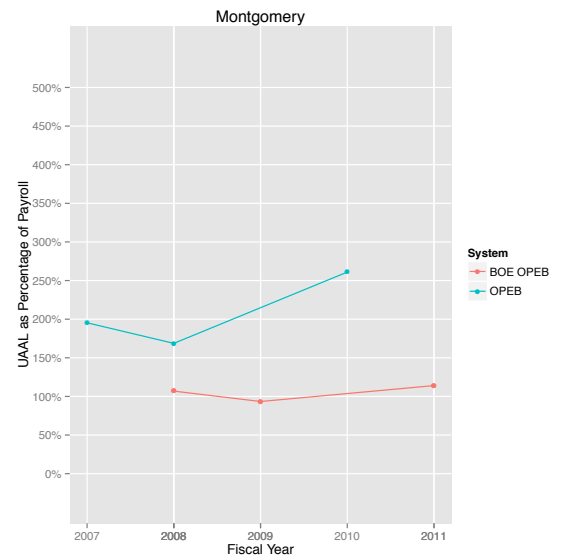
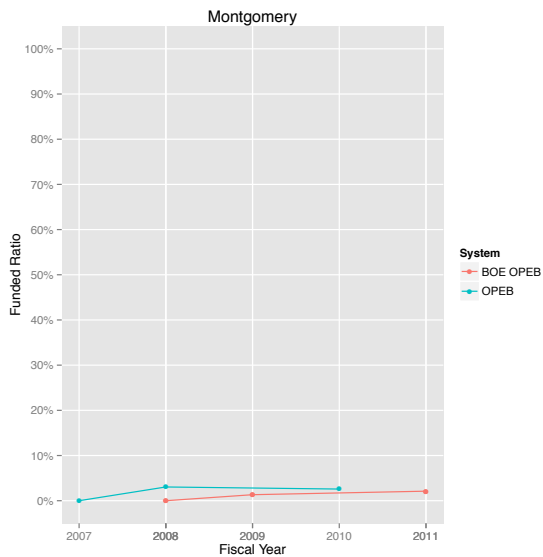
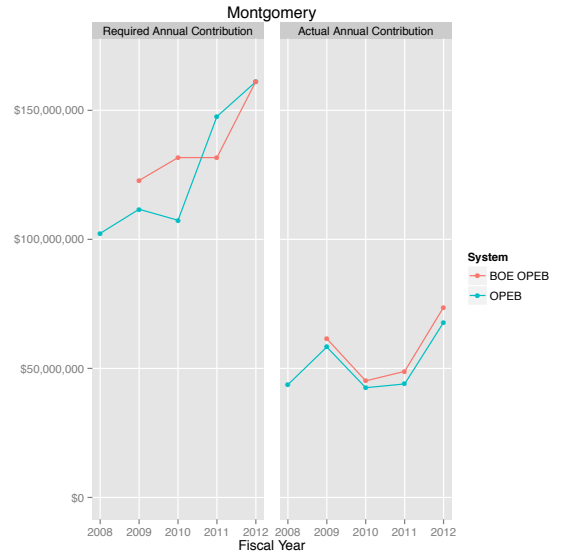
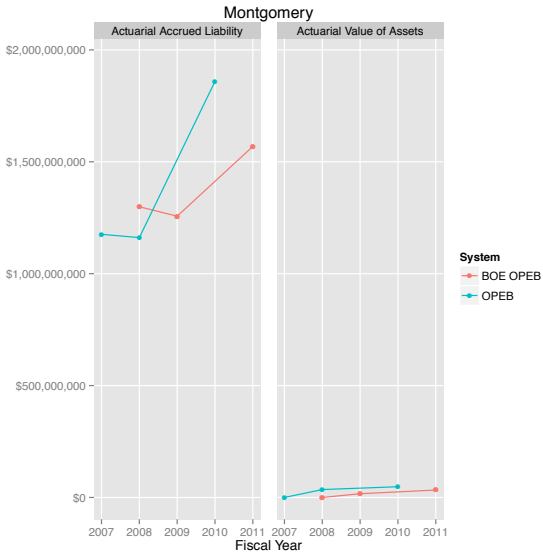
Perpetual Shortfall: Maryland's Pension and Benefit Funds



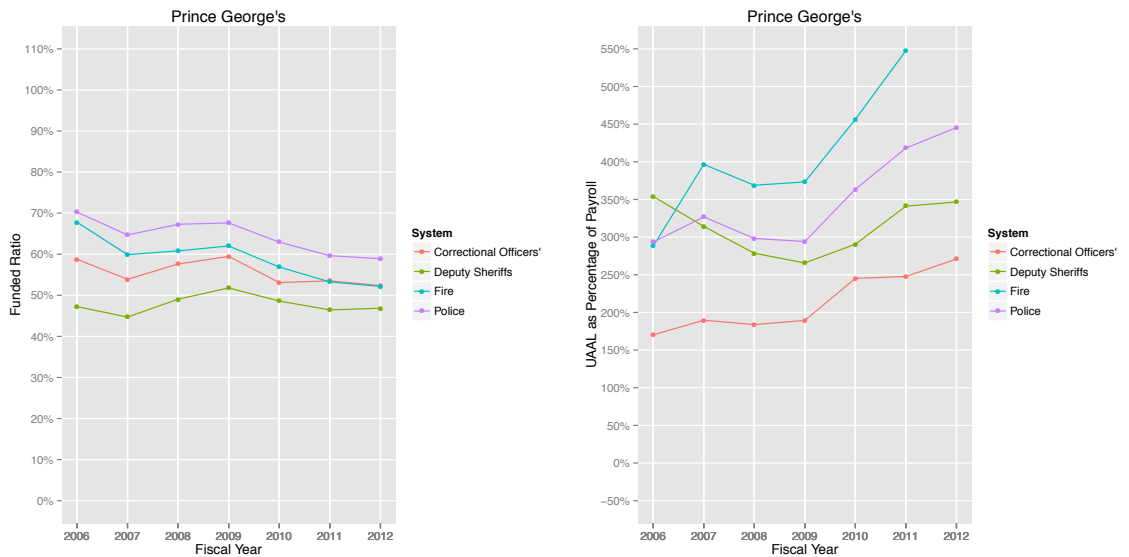
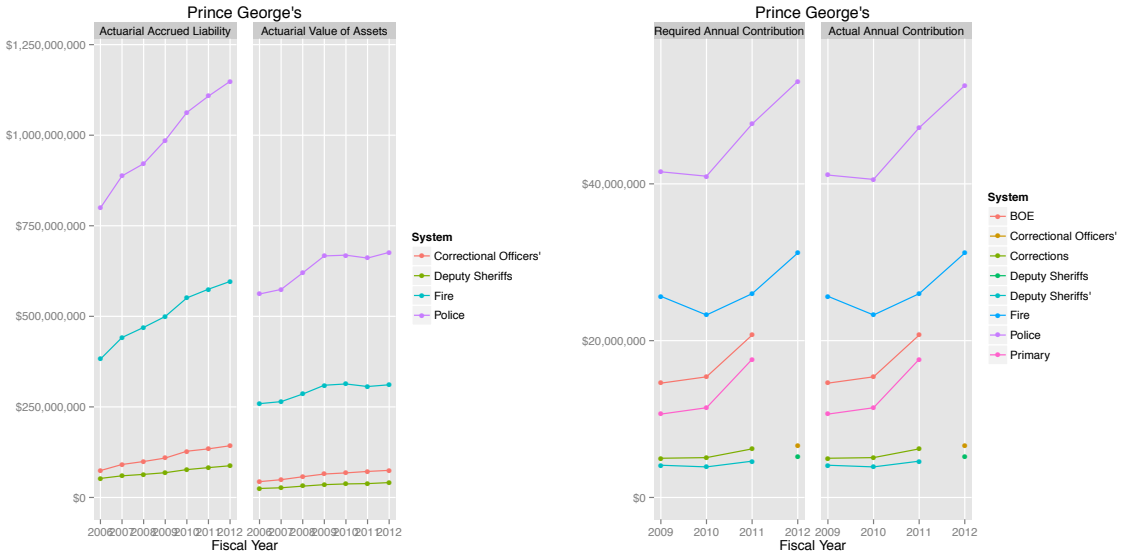
Perpetual Shortfall: Maryland's Pension and Benefit Funds



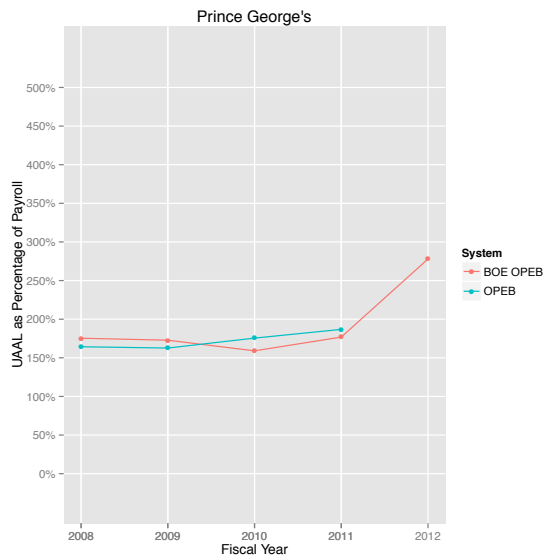
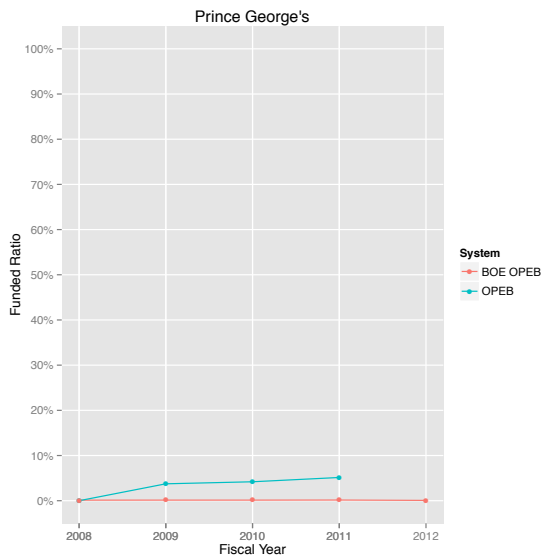
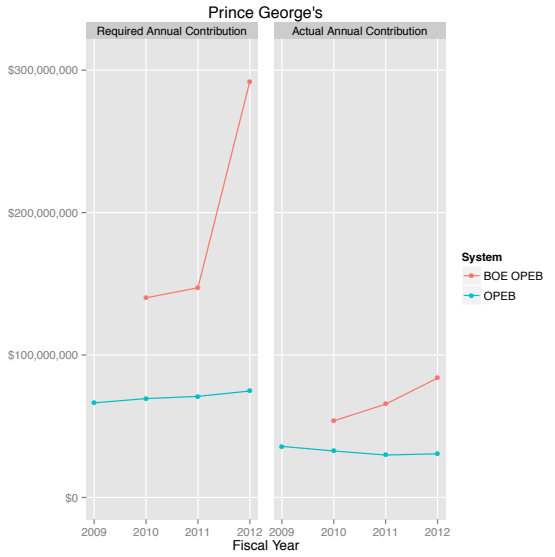
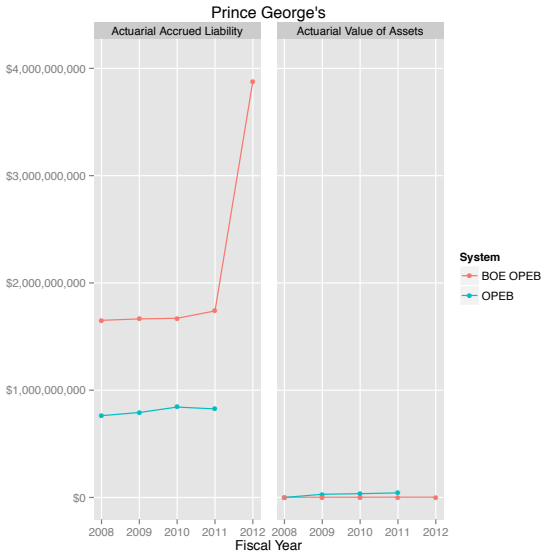
Perpetual Shortfall: Maryland's Pension and Benefit Funds



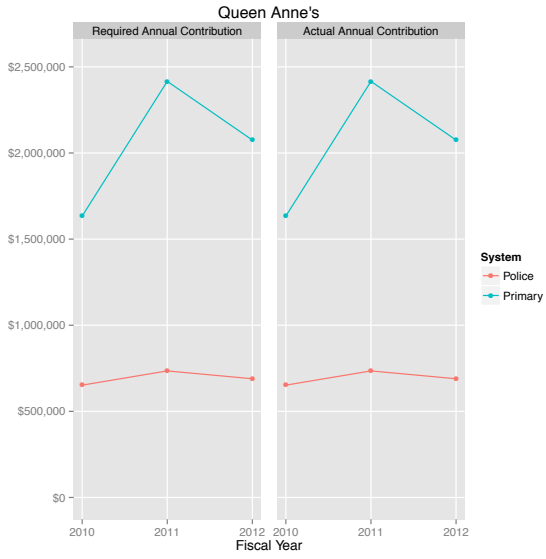
Perpetual Shortfall: Maryland's Pension and Benefit Funds



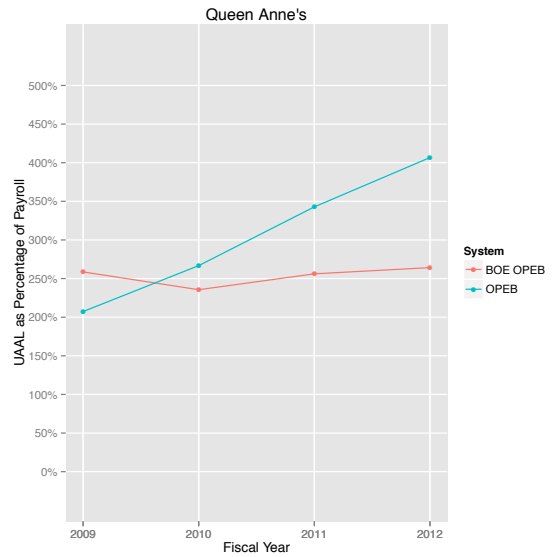
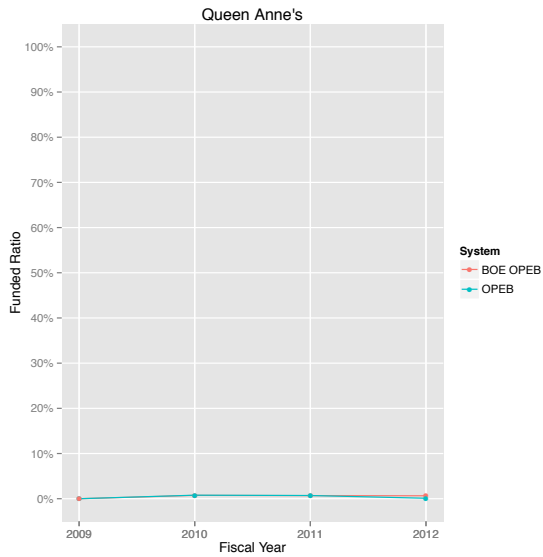
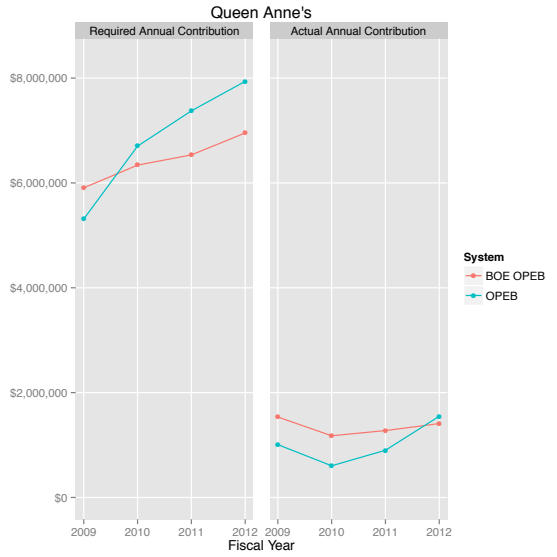
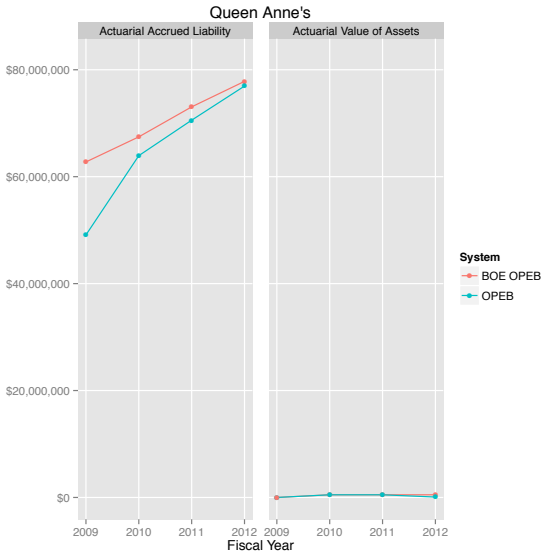
Perpetual Shortfall: Maryland's Pension and Benefit Funds



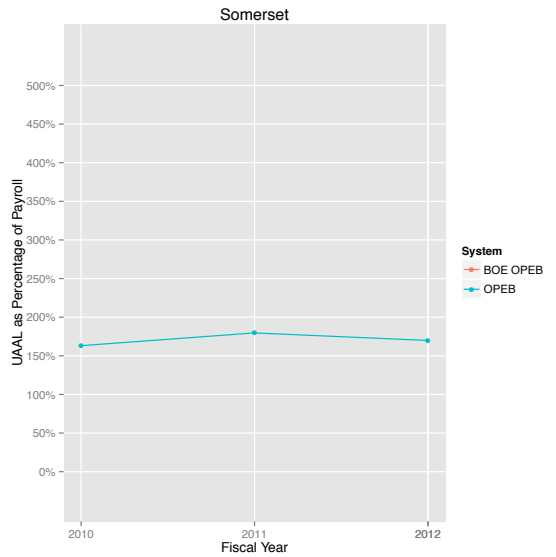
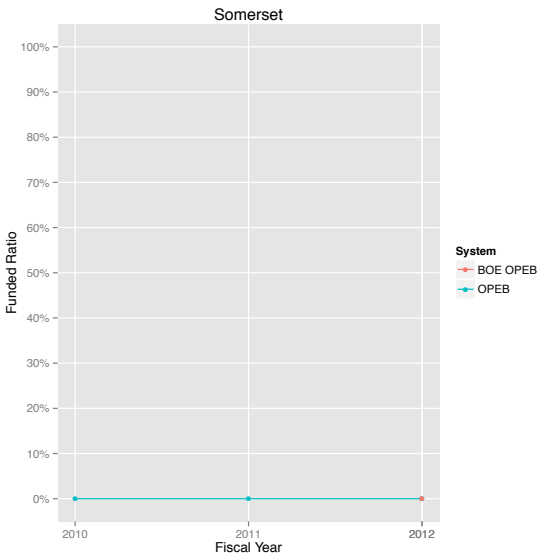
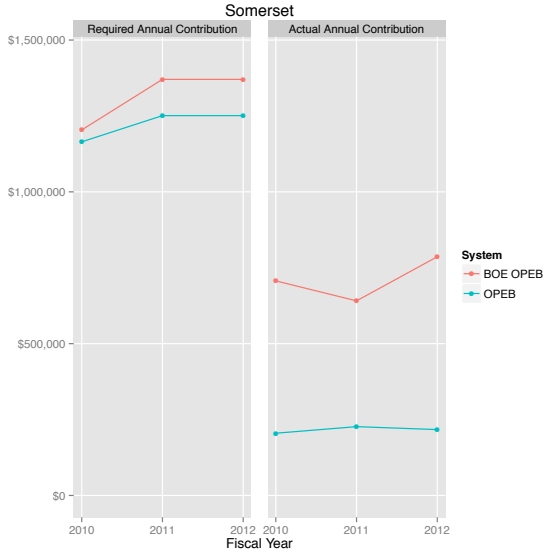
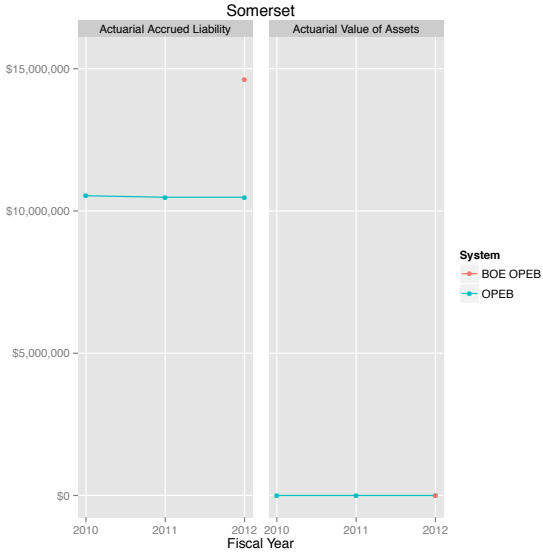
Perpetual Shortfall: Maryland's Pension and Benefit Funds



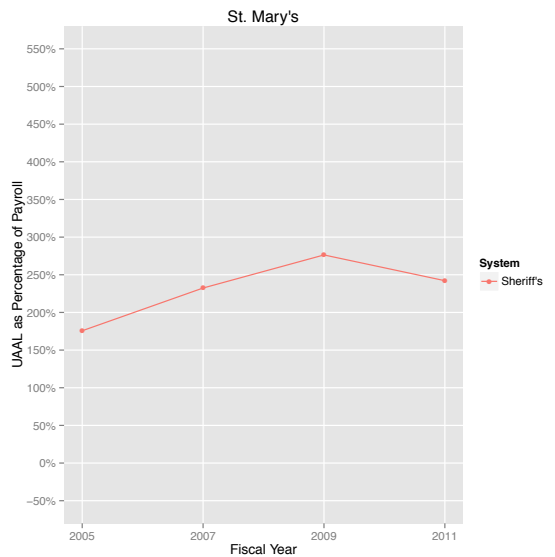
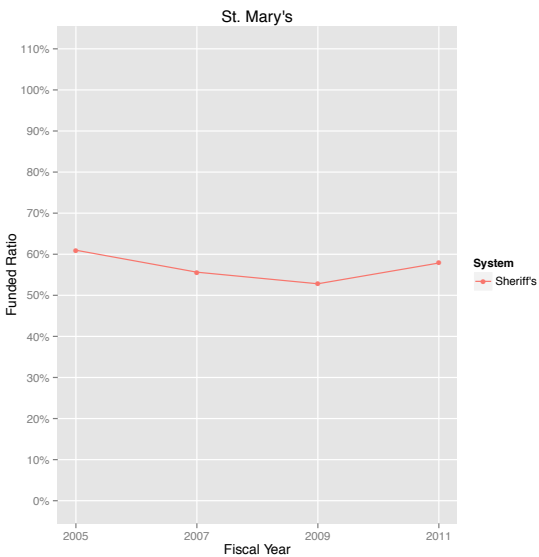
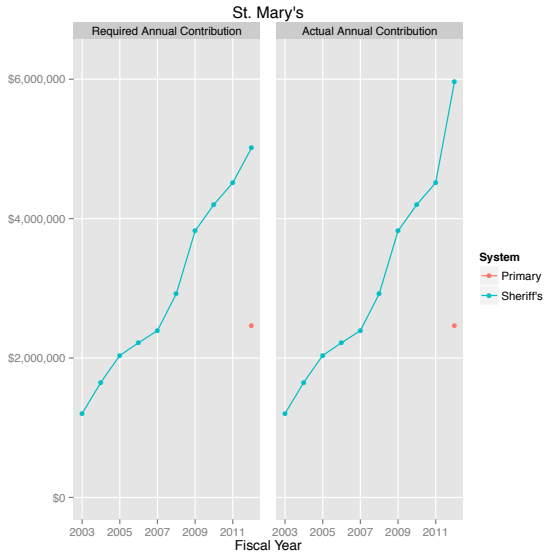
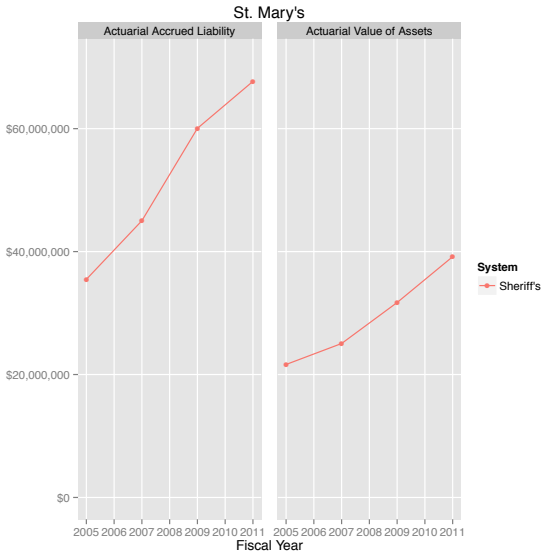
Perpetual Shortfall: Maryland's Pension and Benefit Funds



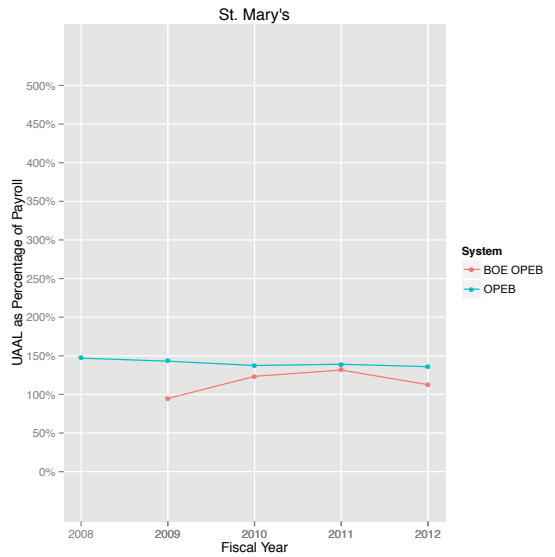
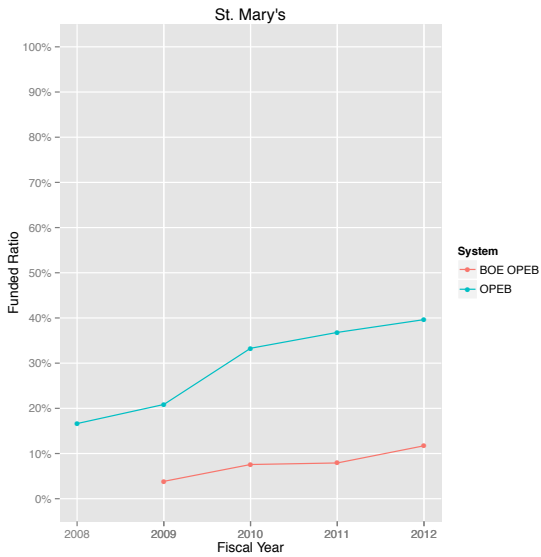
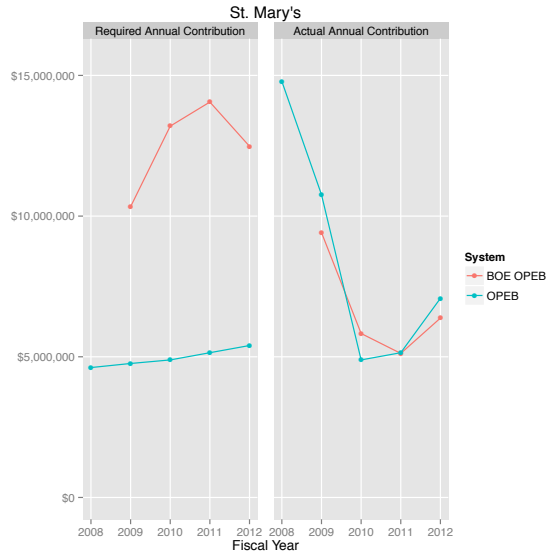
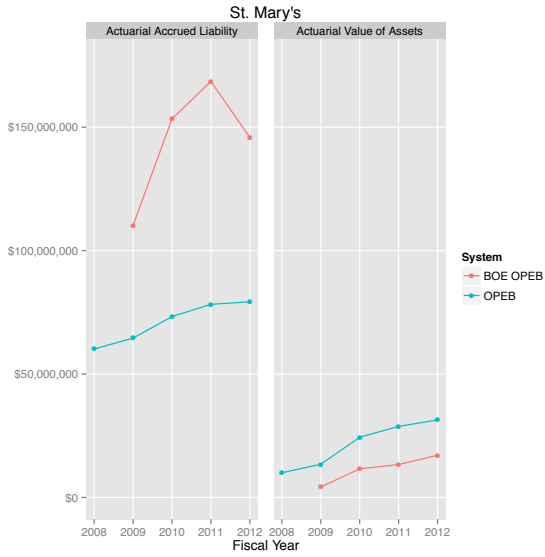
Perpetual Shortfall: Maryland's Pension and Benefit Funds

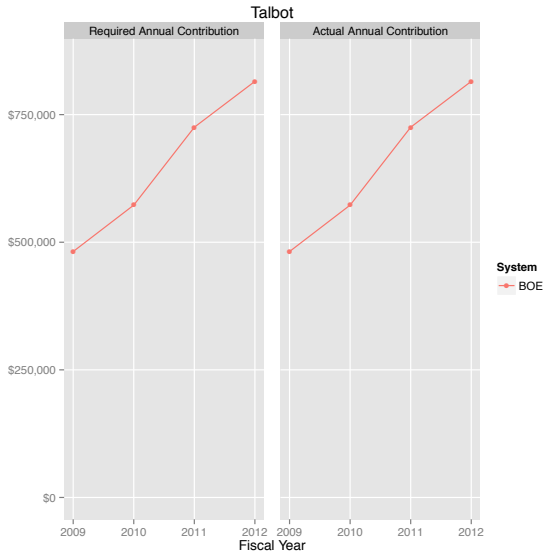


Perpetual Shortfall: Maryland's Pension and Benefit Funds

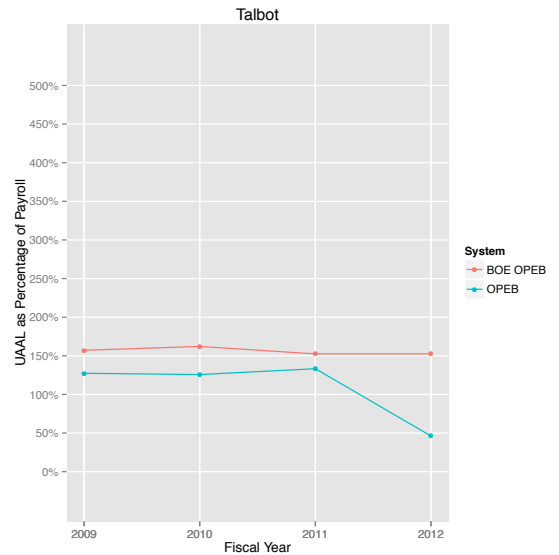
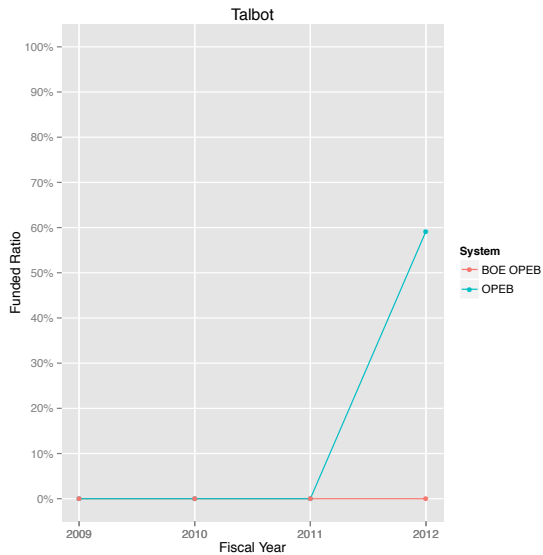
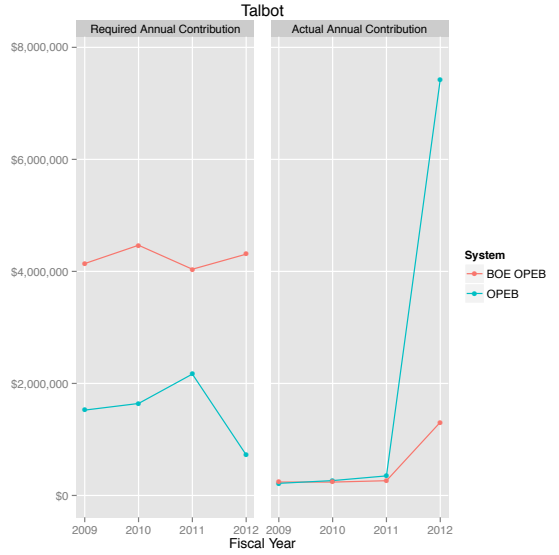
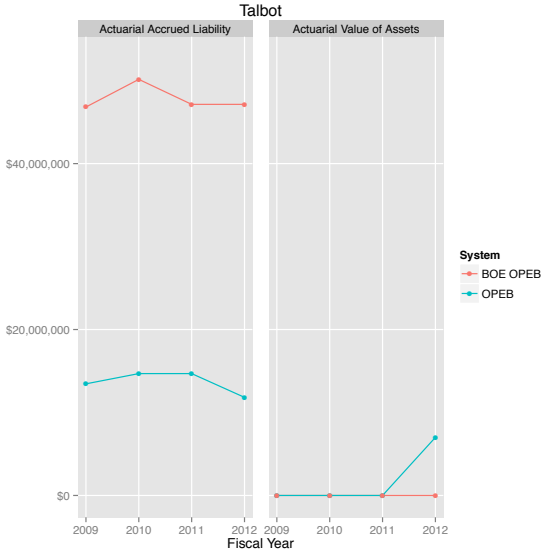


Perpetual Shortfall: Maryland's Pension and Benefit Funds

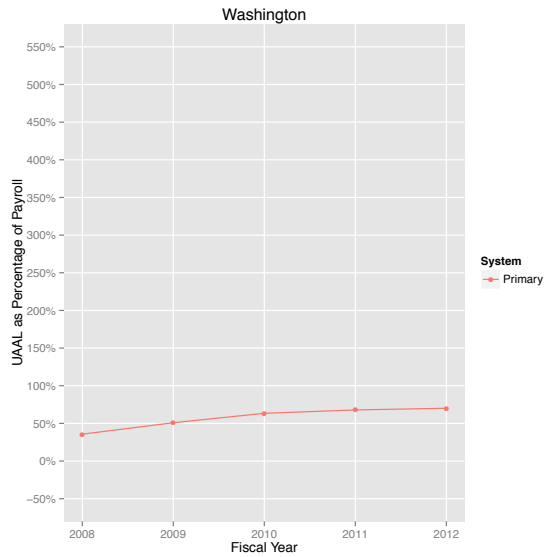
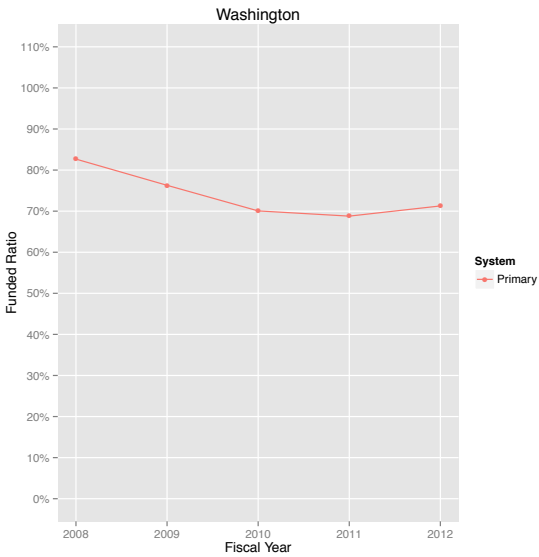
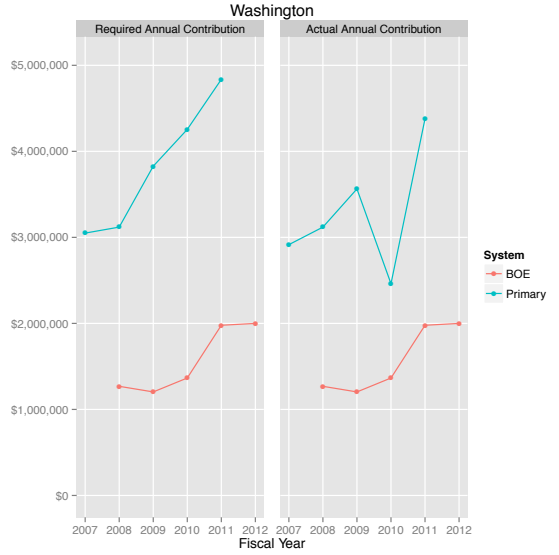
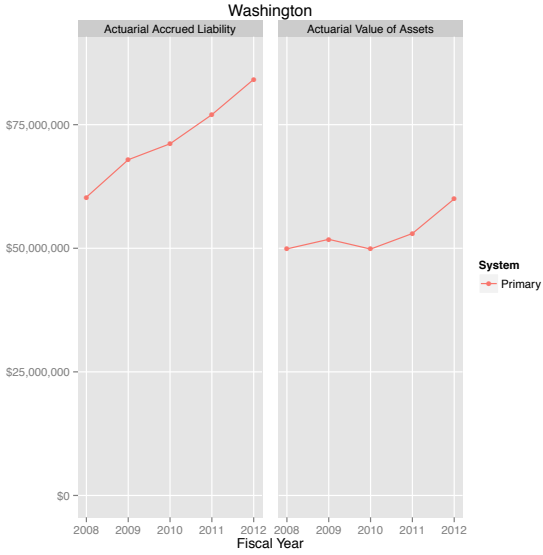




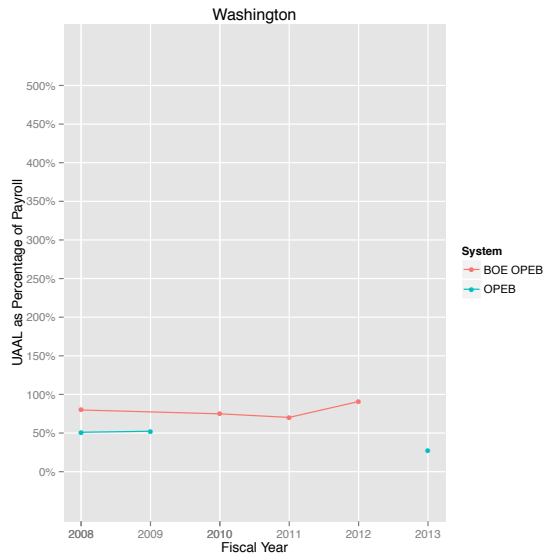
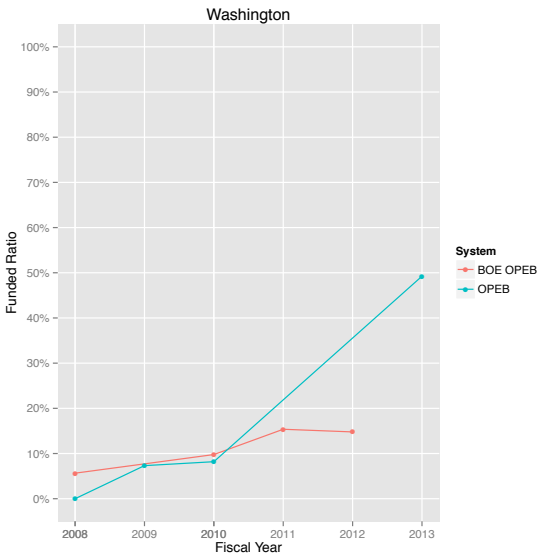
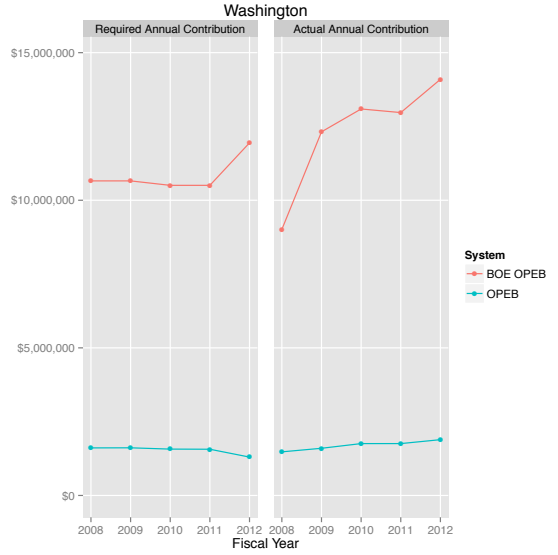
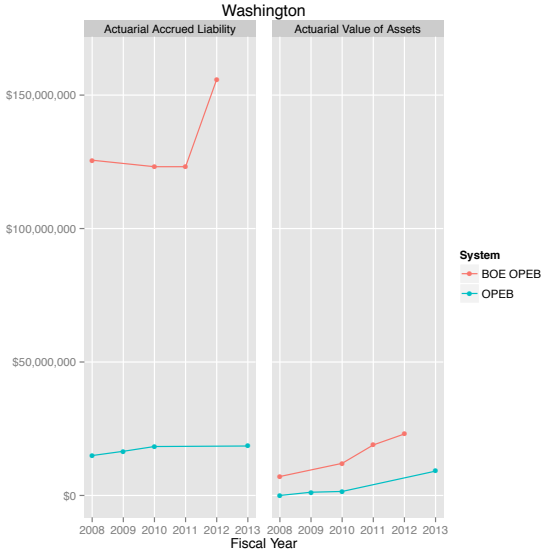
Perpetual Shortfall: Maryland's Pension and Benefit Funds



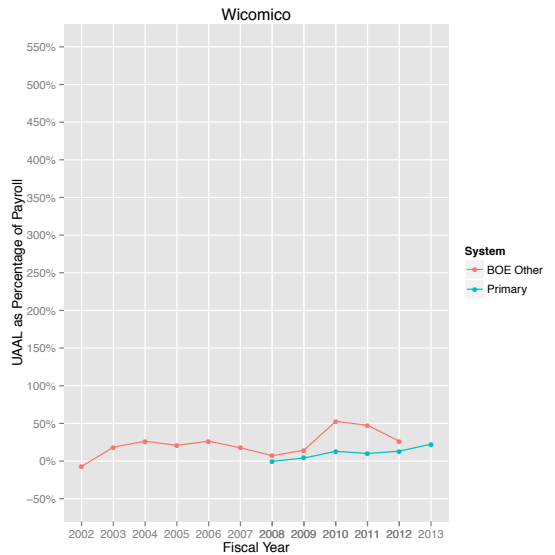
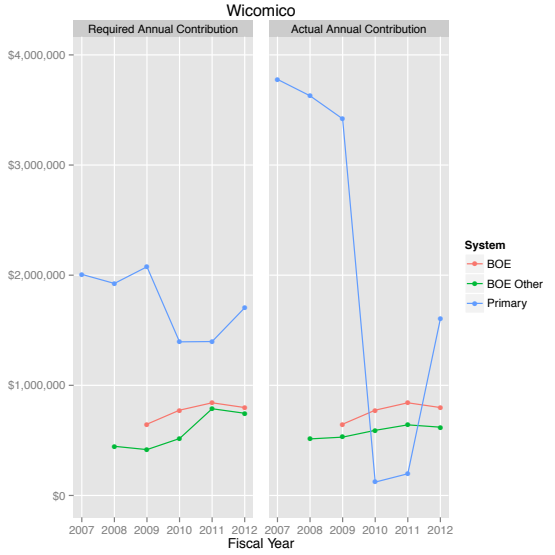
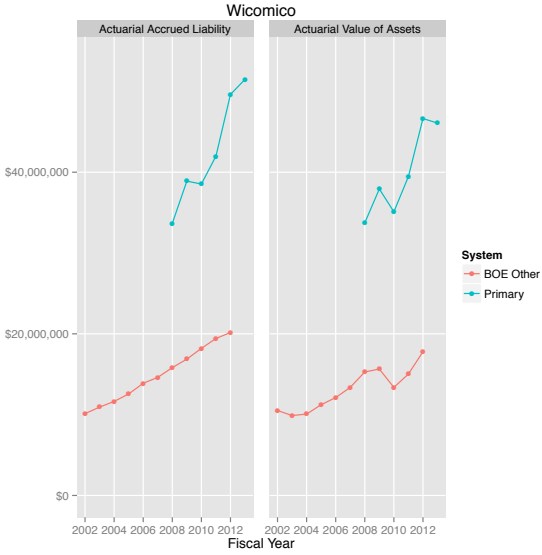
Perpetual Shortfall: Maryland's Pension and Benefit Funds



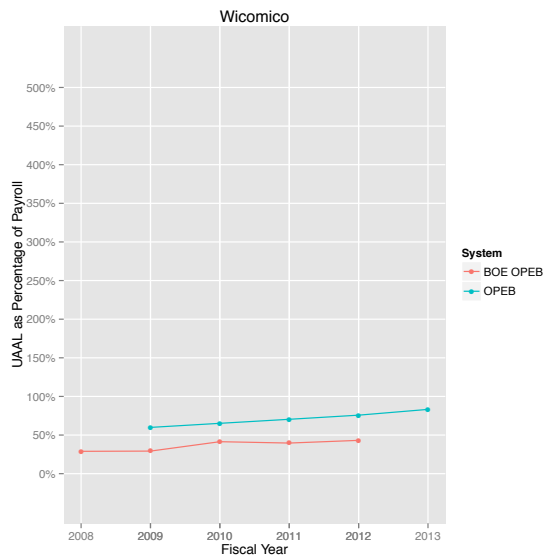
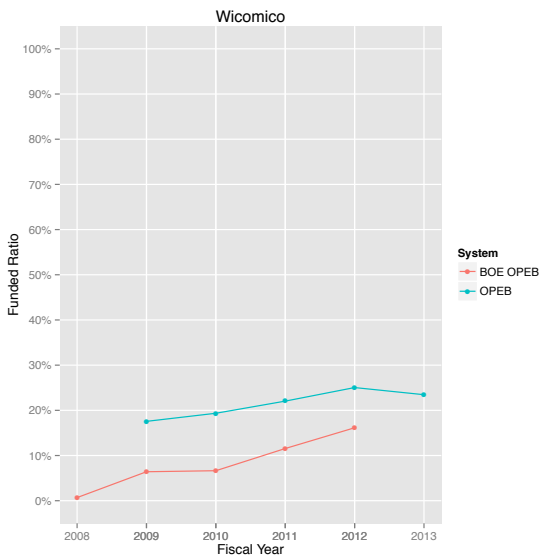
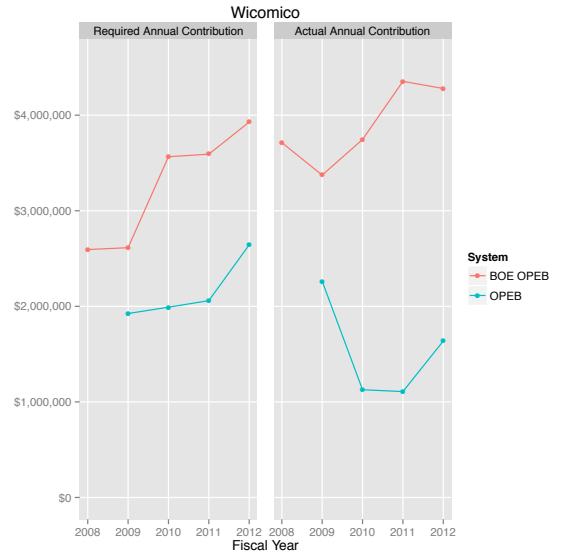
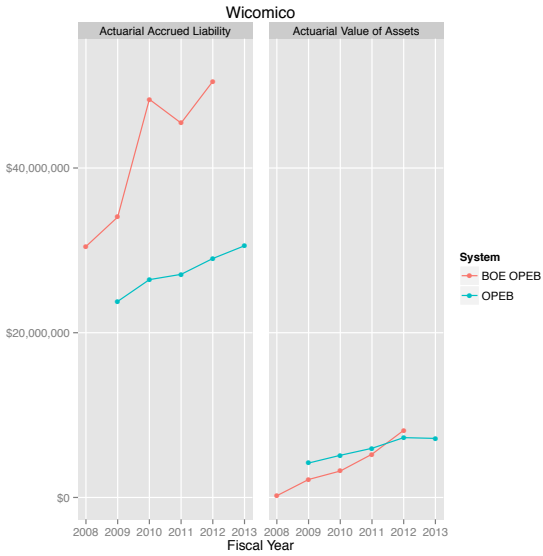
Perpetual Shortfall: Maryland's Pension and Benefit Funds



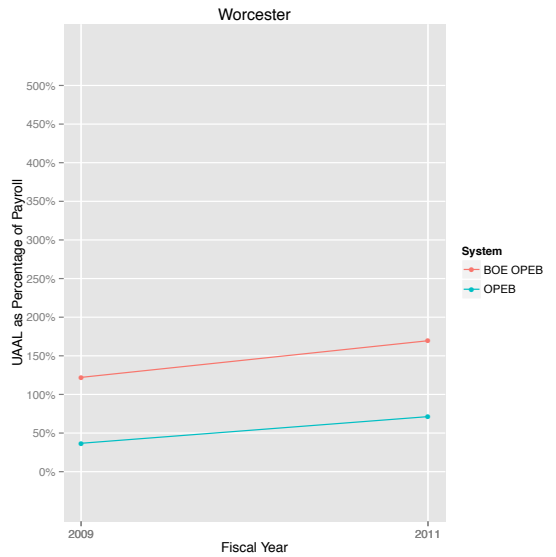
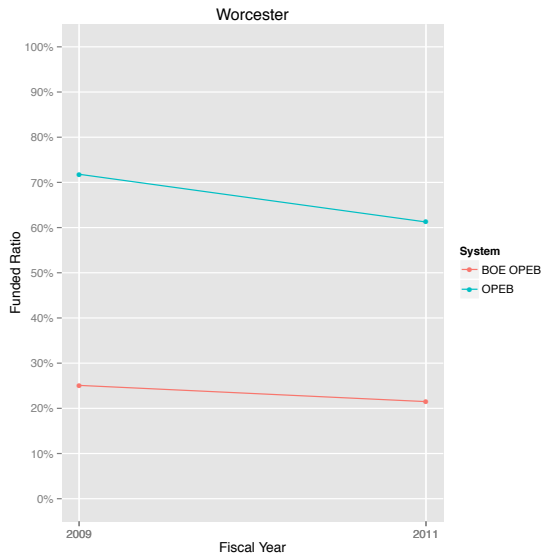
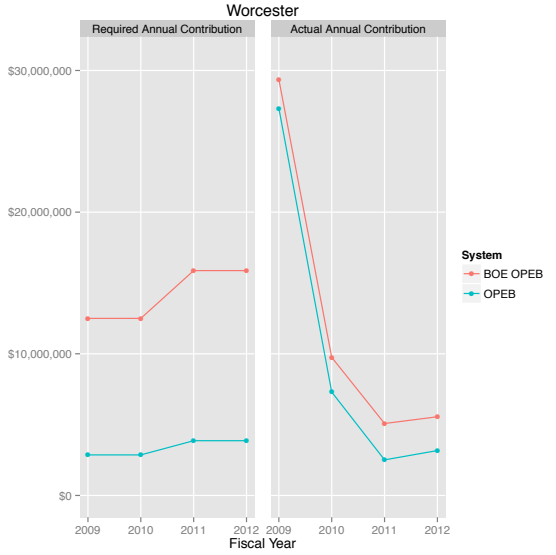
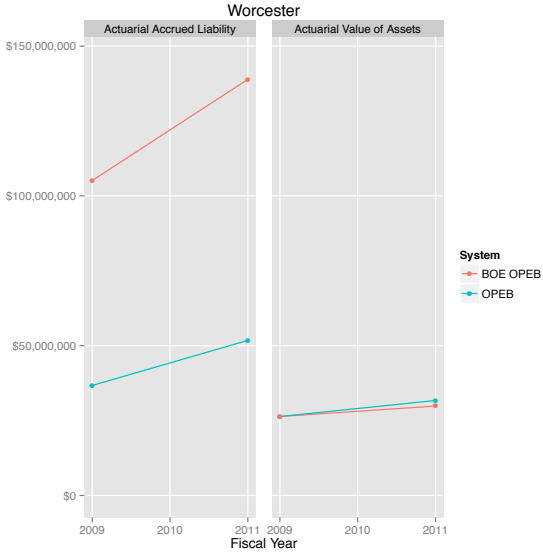
Perpetual Shortfall: Maryland's Pension and Benefit Funds



Perpetual Shortfall: Maryland's Pension and Benefit Funds



Perpetual Shortfall: Maryland's Pension and Benefit Funds



LIST OF ABBREVIATIONS

BOE	Board of Education	OPEB	Other Post-Employment Benefits
ERPS	Employees' Retirement and Pension System	SRPS	State Retirement and Pension System
LEOPS	Law Enforcement Officers' Pension System	TRPS	Teachers' Retirement and Pension System
MTA	Maryland Transit Administration		

ABOUT THE MARYLAND PUBLIC POLICY INSTITUTE

Founded in 2001, the Maryland Public Policy Institute is a nonpartisan public policy research and education organization that focuses on state policy issues. Our goal is to provide accurate and timely research analysis of Maryland policy issues and market these findings to key primary audiences.

The mission of the Maryland Public Policy Institute is to formulate and promote public policies at all levels of government based on principles of free enterprise, limited government, and civil society.

In order to maintain objectivity and independence, the Institute accepts no government funding and does not perform contract research. The Maryland Public Policy Institute is recognized as a 501 (C) (3) research and education organization under the Internal Revenue Code.

The Maryland Public Policy Institute

One Research Court | Suite 450 | Rockville, Maryland 20850 | mdpolicy.org